

SIG SAUER®

WHEN IT COUNTS™

SIG SAUER®
WHEN IT COUNTS™

SIG SAUER, Inc.
18 Industrial Drive
Exeter, NH 03833 USA
Phone: (603) 772-2302

An ISO 9001:2000 Certified
Company Manufacturing in
Exeter, New Hampshire

Specifications subject to
change without notice.
©2009 SIG SAUER, Inc.
All rights reserved. Printed in USA

The following trademarks are the
property of SIG SAUER, Inc.

SIG SAUER®
Equinox®
SIGLITE®
Mosquito®
Nitron®
C3®
P210®
P220®
P225®
P226®
P229®
P239®

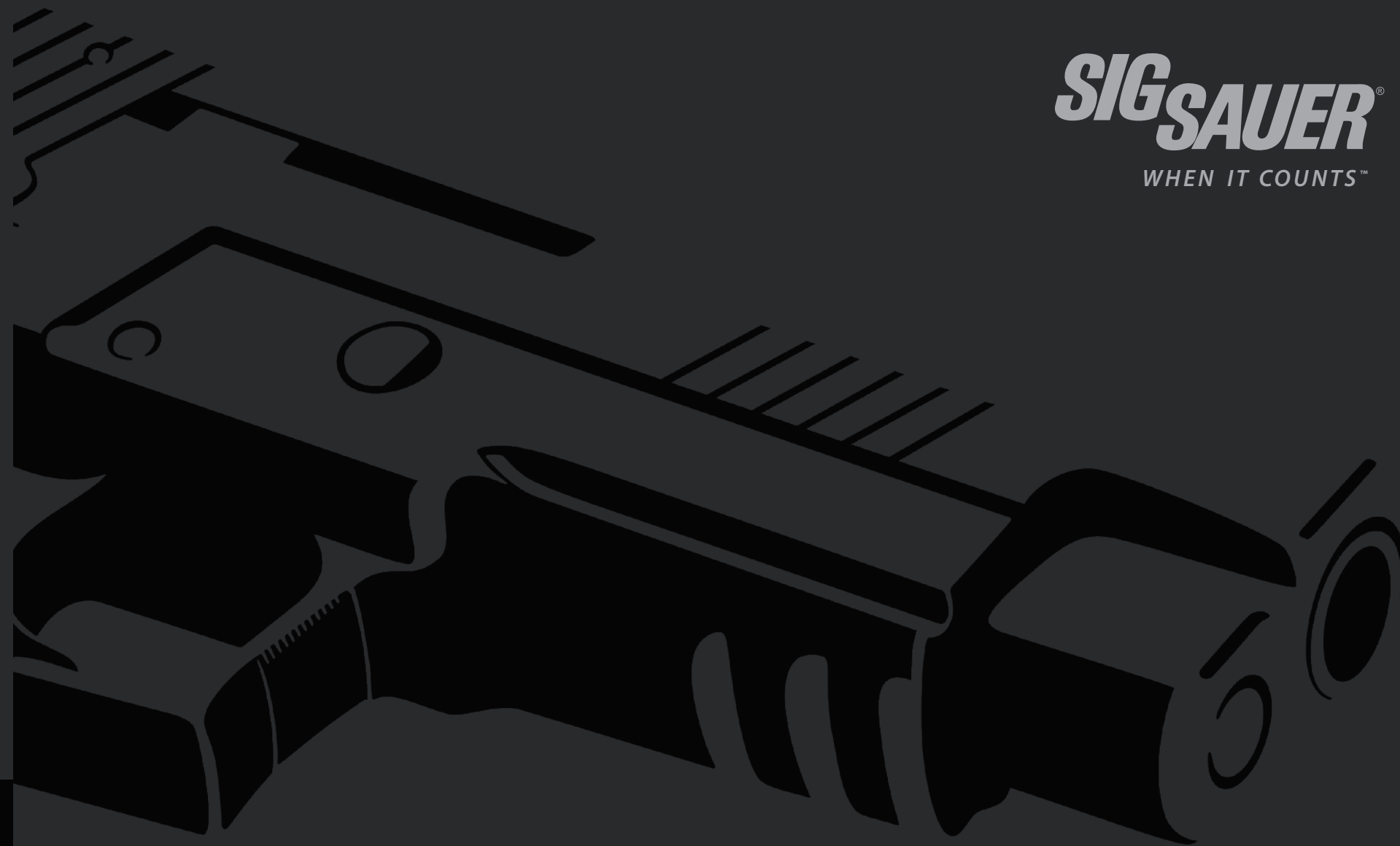
P250®
SIG556®
P228™
P232™
P238™
P556™
P245™
X-Five™
X-CHANGE™
SAS™
SG 550™

SG 551™
SIG Anti-Snag™
SIG PRO®
SIGSCM™
SP2022®
SRT™
SSG 3000™
STOPLITE™
SIG SAUER
Academy™
Tactical 2™

DAK™
When It Counts™
Everything
Changes™
P522™
SIG522™
SIG516™
SIG517™
2SUM™
X-SIX™

Blackwater® is a registered trademark of Blackwater Worldwide
Dawson® is a registered trademark of Dawson Precision
Ergo Grip XT® is a registered trademark of Falcon Industries, Inc.
Hogue® is a registered trademark of Hogue Combat Grips, Inc.
Magpul® is a registered trademark of Magpul Industries Corp.
Novak® is a registered trademark of Novak Design, Inc.
PLUGS® is a registered trademark of StreamWorks, Inc.
TRUGLO® is a registered trademark of TRUGLO, Inc.
USPSA™ is a trademark of the United States Practical
Shooting Association
Warren® is a registered trademark of Warren Tactical Series, Inc.

sigsauer.com



SIG SAUER® | RIFLES

Combining refined precision with exceptional performance, the SIG SAUER line of tactical rifles is designed to fill every shooter's niche—from practice at the range to personal defense.

CONTENTS

1	RIFLE INTRO
2	SIG556® PATROL
4	SIG556®
6	SIG556® DMR™/SIGSCM™
8	SIG522™
10	TACTICAL PISTOLS
12	SIG516™
14	SIG716™
16	TACTICAL 2™/SSG 3000™
18	PISTOL INTRO
20	P250®
24	P226® E ² /P229® E ²
26	P220®
28	P226®
30	P229®
32	P239®
34	P232®
36	P238™
38	1911
40	COMPETITION SHOOTING
42	TARGET
44	CLASSIC .22'S
46	MOSQUITO®
48	ELITE
50	COMBAT
52	EQUINOX®
54	SAS™ GEN II
56	SIG SAUER® ACADEMY
58	CONVERSION KITS
60	ACCESSORIES
62	RIFLE SPECIFICATIONS
64	PISTOL SPECIFICATIONS

SIG556® PATROL

NEW EDITION

The new SIG556 Patrol rifle adds a compact forend in either the classic tapered profile or a quad rail configuration that allows the fast and simple attachment of numerous tactical accessories. When these features are combined with the carbine’s length-adjustable folding and locking stock, the SIG556 is an ideal all-around rifle.

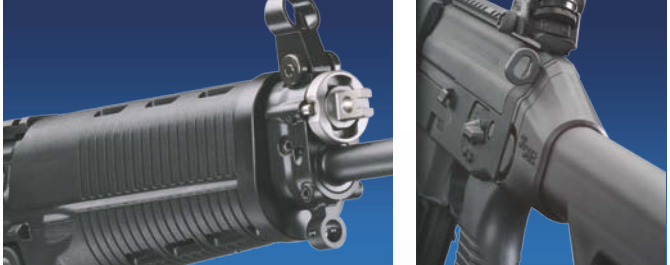


- SIG556 PATROL SWAT**
- action:* Semi-automatic
 - operating system:* Gas piston, rotating bolt
 - caliber:* 5.56 x 45mm NATO
 - stock:* Folding / length adjustable
 - forend:* Alloy quad rail
 - upper receiver:* Steel, Nitron® finish
 - lower:* 7075-T6 aluminum, Hard coat anodize
 - weight w/out mag:* 7.7 lbs
 - length overall:* 36.1"; 34.6" collapsed; 27.1" folded
 - barrel length & twist:* 16"; 1 in 7"
 - magazine:* AR-15 Type, Polymer, 30 round
 - features:* Quad rail forend, Two-position gas valve

Quad Rail Covers (optional)
Light weight polymer covers offer protection for the quad rails and provide a comfortable gripping surface.



Standard AR-15/M16 Magazine
30 round polymer magazine with integrated connecting feature for multiple magazines.



With reduced forend length, gas volume is regulated by a two-position valve that practically eliminates carbon build-up and firing residue, ensuring reliable function under the most extreme conditions. • Ambidextrous sling attachment.



- SIG556 PATROL**
- action:* Semi-automatic
 - operating system:* Gas piston, rotating bolt
 - caliber:* 5.56 x 45mm NATO
 - stock:* Folding / length adjustable
 - forend:* Polymer
 - upper receiver:* Steel, Nitron finish
 - lower:* 7075-T6 aluminum, Hard coat anodize
 - weight w/out mag:* 7.5 lbs
 - length overall:* 36.1"; 34.6" collapsed; 27.1" folded
 - barrel length & twist:* 16"; 1 in 7"
 - magazine:* AR-15 Type, Polymer, 30 round
 - features:* Short gas system

Some models are shown with optional accessories that are not included.



SHARED FEATURES

- Reduced length gas piston operating rod system for lighter weight
- Two-position adjustable gas valve ensures function in extreme conditions
- Rotating bolt
- Accepts standard AR type magazines
- 5.56 x 45mm NATO
- Military grade barrel ensures accuracy and durability
- Industry standard 1/2" x 28TPI muzzle thread w/ A2 flash suppressor
- Swiss design length adjustable folding stock
- Multiple sling attachment points

OPTIONAL ACCESSORIES

- Mini Red Dot 1x optical sight
- Interlocking 30 round magazine

Visit [sigsauer.com](https://www.sigsauer.com) for complete SIG556 Patrol line

Model Specifications: see pages 62-63

SIG556®

THE NEXT GENERATION

The SIG SAUER® SG 550/551 weapons system earned worldwide recognition for reliability and accuracy. Now, SIG has managed to improve on perfection, tailoring the rifle for the American market, making it compatible with AR magazines. Enhancements include a Picatinny rail and folding, locking, length-adjustable stock making it even more efficient. The SWAT version replaces the tapered, ergonomic forend with a quad rail for accessorizing.



Butt Pads

The SIG556 SWAT models ship with dual butt pads allowing for an additional 1" increase in LOP.



A2 Flash Suppressor

Rotary Diopter Sight

M1913 Rail Kit

SIG556 CLASSIC

- action:* Semi-automatic
- operating system:* Gas piston, rotating bolt
- caliber:* 5.56 x 45mm NATO
- stock:* Folding / length adjustable
- forend:* Polymer
- upper receiver:* Steel, Nitron® finish
- lower:* 7075-T6 aluminum, Hard coat anodize
- barrel length & twist:* 16"; 1 in 7"
- features:* Swiss design polymer forend w/ optional M1913 rail kit

SIG556 SWAT

- action:* Semi-automatic
- operating system:* Gas piston, rotating bolt
- caliber:* 5.56 x 45mm NATO
- stock:* Folding / length adjustable
- forend:* Alloy quad rail
- upper receiver:* Steel, Nitron® finish
- lower:* 7075-T6 aluminum, Hard coat anodize
- barrel length & twist:* 16"; 1 in 7"
- magazine:* AR-15 Type, Polymer, 30 round
- features:* Ergonomic swiss design pistol grip
Extra butt pad adds 1 inch overall length

SHARED FEATURES

- Robust full length gas piston operating rod system
- Two-position adjustable gas valve ensures function in extreme conditions
- Rotating bolt
- Accepts standard AR type magazines
- 5.56 x 45mm NATO
- Military grade barrel ensures accuracy and durability
- Industry standard 1/2" x 28TPI muzzle thread w/ A2 flash suppressor
- Swiss design length adjustable folding stock
- Multiple sling attachment points

OPTIONAL ACCESSORIES

- Rotary Diopter Rear Sight
- M1913 Rail Kit for polymer forends
- Interlocking 30 round magazines (set of 2, with connector)

Visit sigsauer.com for complete SIG556 line

Model Specifications: see pages 62-63

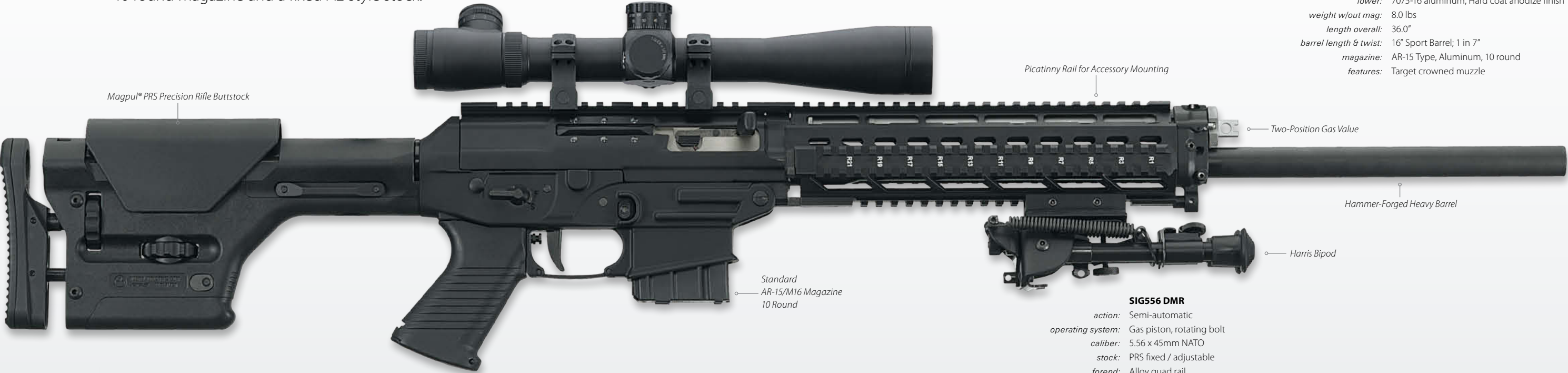
The SIG556 adjustable, side-folding buttstock locks securely in the folded position • The two-position adjustable gas piston allows users to fine-tune the SIG556 to operate flawlessly with all types of ammunition.



SIG556® DMR / SIGSCM™

TACTICAL PRECISION

The SIG556 DMR extends the reach of the Classic line through the use of a new 21-inch hammer-forged heavy barrel. The DMR can be adapted for any body type with adjustments to the stock’s length-of-pull and comb height. It features a two-stage factory-tuned trigger with a consistent pull weight that will enhance any Designated Marksmen’s reputation. The SIGSCM (Sport Configuration Model) is designed especially for sportsmen and is compliant in most states. It features a 16-inch barrel with a crowned muzzle, 10 round magazine and a fixed A2 style stock.



- SIGSCM**
- action: Semi-automatic
 - operating system: Gas piston, rotating bolt
 - caliber: 5.56 x 45mm NATO
 - stock: A2 fixed
 - forend: Polymer
 - upper receiver: Steel, Nitron® finish
 - lower: 7075-T6 aluminum, Hard coat anodize finish
 - weight w/out mag: 8.0 lbs
 - length overall: 36.0"
 - barrel length & twist: 16" Sport Barrel; 1 in 7"
 - magazine: AR-15 Type, Aluminum, 10 round
 - features: Target crowned muzzle

- SIG556 DMR**
- action: Semi-automatic
 - operating system: Gas piston, rotating bolt
 - caliber: 5.56 x 45mm NATO
 - stock: PRS fixed / adjustable
 - forend: Alloy quad rail
 - upper receiver: Steel, Nitron finish
 - lower: 7075-T6 aluminum, Hard coat anodize finish
 - weight w/out mag: 12.0 lbs
 - length overall: 41.5"
 - barrel length & twist: 21" Heavy Barrel; 1 in 10"
 - magazine: AR-15 Type, Aluminum, 10 round
 - features: Two-stage trigger with over travel stop
Harris bipod

SHARED FEATURES

- Robust full length gas piston operating rod system
- Two-position adjustable gas valve ensures function in extreme conditions
- Rotating bolt
- Accepts standard AR type magazines
- 5.56 x 45mm NATO
- Military grade barrel ensures accuracy and durability
- M1913 Picatinny rail for mounting optics
- Ambi safety selector
- Fixed stock

OPTIONAL ACCESSORIES

- Mini Red Dot 1x optical sight
- M1913 Picatinny rail cover set
- Spare magazines (10, 20 & 30 round)

Visit sigsauger.com for complete SIG556 DMR/SIGSCM line
Model Specifications: see pages 62-63

Tactical Green Laser Aiming Device™
The compact Tactical Green Laser Aiming Device provides 20 times the brightness of conventional red laser sights.

**Optional
AR-15/M16 Magazine**
20 round metal magazine.

Some models are shown with optional accessories that are not included.

The DMR’s Magpul® PRS precision stock is adjustable for both comb height and length-of-pull, providing a custom fit and promoting repeatable accuracy.



SIG522™

AN UNCOMPROMISING TRAINING TOOL

Nothing improves performance like training, but centerfire ammunition is often prohibitively expensive. That concern is now alleviated by the SIG522. This full-size rifle handles like the centerfire SIG556®, but fires affordable .22LR rimfire ammo. It includes a metal receiver, collapsible folding and locking stock, Picatinny rail, and just as importantly, the SIG522 offers you affordability, with familiar handling, accessory interchangeability and genuine SIG SAUER® quality.



- SIG522 SWAT**
- action:* Semi-automatic
 - operating system:* Blowback
 - caliber:* .22LR
 - stock:* Folding / length adjustable
 - forend:* Alloy quad rail
 - upper receiver:* 7075-T6 aluminum, Hard coat anodize
 - lower:* Polymer
 - weight w/out mag:* 6.6 lbs
 - length overall:* 35.1"; 33.6" collapsed; 26.1" folded
 - barrel length & twist:* 16.6"; 1 in 16"
 - magazine:* Polymer, 10 or 25-round
 - features:* Swiss type folding stock
Ambidextrous magazine catch



- SIG522 CLASSIC**
- action:* Semi-automatic
 - operating system:* Blowback
 - caliber:* .22LR
 - stock:* Folding / length adjustable
 - forend:* Polymer
 - upper receiver:* 7075-T6 aluminum, Hard coat anodize
 - lower:* Polymer
 - barrel length & twist:* 16.6"; 1 in 16"
 - magazine:* Polymer, 10 or 25 round
 - features:* "Gas valve" storage cavity
Multiple sling attachment points

Mini Red Dot Sight™

The STS-081 has a parallax-free 1x red dot with 4 MOA reticle, glass lenses with anti-reflex, multilayer coating, and 11 daylight settings.



SHARED FEATURES

- Reliable blowback operation
- Economical .22LR ammunition
- Integrated M1913 Picatinny receiver rail for mounting optics
- 7075-T6 Aircraft grade aluminum upper receiver with hard coat anodize finish
- Lightweight polymer lower
- Industry standard 1/2"x 28TPI muzzle thread with AR style flash suppressor
- Swiss design length-adjustable folding stock
- Multiple sling attachment points

OPTIONAL ACCESSORIES

- Mini Red Dot 1x optical sight
- M1913 Rail Kit for polymer forends
- Spare magazines (10 and 25 round)

Visit [sigsauer.com](https://www.sigsauer.com) for complete SIG522 line

Model Specifications: see pages 62-63

Adjustable stock snaps and securely locks into a folded position with a length-of-pull that can be preset by the user. • Integral, reversible sling swivel.



TACTICAL PISTOLS

A NEW CONCEPT

All the features and exceptional performance of our SIG556® rifle are now available in two pistol configurations, both offering a rugged, reliable, accurate system. The P556™ pistol features the same proven two-position adjustable gas piston operating rod system used on the SIG556 rifle, joined to a lightweight alloy trigger housing that accepts standard AR magazines. Meanwhile, the like-sized rimfire P522™ pistol serves as both an inexpensive trainer and hard-edged “fun gun.”



The P556 pistol has a single sling attachment points. • Convenient thumb selector switch for safe or fire position is standard on P556 and P522 models.



Some models are shown with optional accessories that are not included.



SHARED FEATURES

- Compact form factor & lightweight
- Rifle performance in a pistol package
- Industry standard 1/2" x 28 TPI muzzle thread with flash suppressor
- M1913 Picatinny receiver rail for mounting optics
- Ambi safety selector
- Multiple sling attachment points
- Tool-free disassembly for easy maintenance

OPTIONAL ACCESSORIES

- Mini Red Dot 1x optical sight
- G-LAD Green Laser Aiming Device
- M1913 Rail Kit for polymer forends

Visit sigsauger.com for complete P556 and P522 Pistol line

Model Specifications: see pages 62-63

SIG516™

THE FULFILLED POTENTIAL OF THE AR-15/M16

One of the most tested and proven weapons systems in the world achieves ultimate refinement with the introduction of the SIG516 rifle. With its ambidextrous selector switch, chrome-lined, nitride-finished, military grade barrel and adjustable, three- or four-position gas regulator, the SIG516 incorporates all of the most desirable mechanical improvements. Add to these a free-floating quad rail forend and barrel, and a SOPMOD stock and you have the most advanced, versatile AR-based rifle available.



SIG516 PRECISION MARKSMAN

- action: Semi-automatic
- operating system: Gas piston, rotating bolt
- caliber: 5.56 x 45mm NATO
- stock: PRS fixed / adjustable
- forend: Alloy quad rail, free floating
- upper & lower receiver: 7075-T6 aluminum, Hard coat anodize
- weight w/out mag: 7.7 lbs
- length overall: 37.3"; 36.2" stock min adj
- barrel length & twist: 18" free floating match barrel; 1 in 7"
- magazine: AR-15 Type, Aluminum, 20 round
- features: Threaded muzzle (1/2"x28TPI) Two-stage match trigger



SIG516 PATROL

- action: Semi-automatic
- operating system: Gas piston, rotating bolt
- caliber: 5.56 x 45mm NATO
- stock: SOPMOD fixed / adjustable
- forend: Alloy quad rail, free floating
- upper & lower receiver: 7075-T6 aluminum, Hard coat anodize
- weight w/out mag: 7.3 lbs
- length overall: 39.5"; 36.0" collapsed
- barrel length & twist: 16" free floating; 1 in 7"
- magazine: AR-15 Type, Polymer, 30 rd
- features: Ambi sling attachment points M1913 flat top receiver

Though often neglected on sporting guns, a dust cover is included to keep the action clean and functioning in adverse conditions. • The ergonomic charging handle clears the comb of the stock in any position for fast, hassle-free first round chambering.



SHARED FEATURES

- Gas piston operating system
- Three-position gas regulator
- 5.56 x 45mm NATO
- Free-floating military grade chrome lined barrel
- M1913 Picatinny flat top upper
- 7075-T6 Aircraft grade aluminum upper & lower receiver with hard coat anodize finish
- Free-floating aluminum quad rail forend
- Multiple sling attachment points
- Accepts all AR type magazines

OPTIONAL ACCESSORIES

- Mini Red Dot 1x optical sight
- G-LAD Green Laser Aiming Device

Visit sigsauger.com for complete SIG516 line

Model Specifications: see pages 62-63

The gas valve is specially sized to fit a 5.56 x 45mm NATO cartridge, meaning you always have the tool needed for adjustment when in the field.



SIG716™

FAMILIAR HANDLING, UNFAMILIAR POWER

SIG SAUER® has taken the proven features of the A2 and M4 and applied them to an AR-based rifle in the AR's original chambering—the potent 7.62 x 51mm. Gas piston operation, a Picatinny rail, free-floating quad rail forend and barrel, collapsible SOPMOD stock, and compatibility with M14 magazines makes this the medium-bore AR of choice.



SIG716 PATROL

- action:* Semi-automatic
- operating system:* Gas piston, rotating bolt
- caliber:* 7.62 x 51mm NATO
- stock:* SOPMOD fixed / adjustable
- forend:* Alloy quad rail, free floating
- upper & lower receiver:* 7075-T6 aluminum, Hard coat anodize
- weight w/out mag:* 9.3 lbs
- length overall:* 41.3"; 38.0" collapsed
- barrel length & twist:* 16" free floating; 1 in 12"
- magazine:* M14 Type, Steel, 10 or 20 round
- features:* A2 flash suppressor
Three-position gas regulator



Mini Red Dot Sight™

The STS-081 has a parallax-free 1x red dot with 4 MOA reticle, glass lenses with anti-reflex, multilayer coating, and 11 daylight settings.



Quad Rail Covers (Optional)

Lightweight polymer covers offer protection for the quad rails.



The sturdy SOPMOD stock is quickly adjustable for length-of-pull, suiting different shooters and allowing for body armor. • The quad rail handguards allow fast attachment of accessories and are free-floated so there is no effect on accuracy.



SIG716 PRECISION MARKSMAN

- action:* Semi-automatic
- operating system:* Gas piston, rotating bolt
- caliber:* 7.62 x 51mm NATO
- stock:* PRS fixed / adjustable
- forend:* Alloy quad rail, free floating
- upper & lower receiver:* 7075-T6 aluminum, Hard coat anodize
- weight w/out mag:* 9.3 lbs
- length overall:* 39.4"; 36.0" collapsed
- barrel length & twist:* 16" free-floating match barrel; 1 in 11"
- magazine:* M14 Type, Steel, 10 or 20 round
- features:* Threaded muzzle (5/8"x24TPI)
Two stage match trigger



SHARED FEATURES

- Gas piston operating system
- Three-position gas valve
- 7.62 x 51mm NATO
- Free-floating military grade chrome lined barrel
- M1913 Picatinny flat top upper
- 7075-T6 Aircraft grade aluminum upper & lower receiver w/ hard coat anodize finish
- Free-floating aluminum quad rail forend
- Multiple sling attachment points
- M14 type magazine

OPTIONAL ACCESSORIES

- Mini Red Dot 1x optical sight
- Harris Bipod

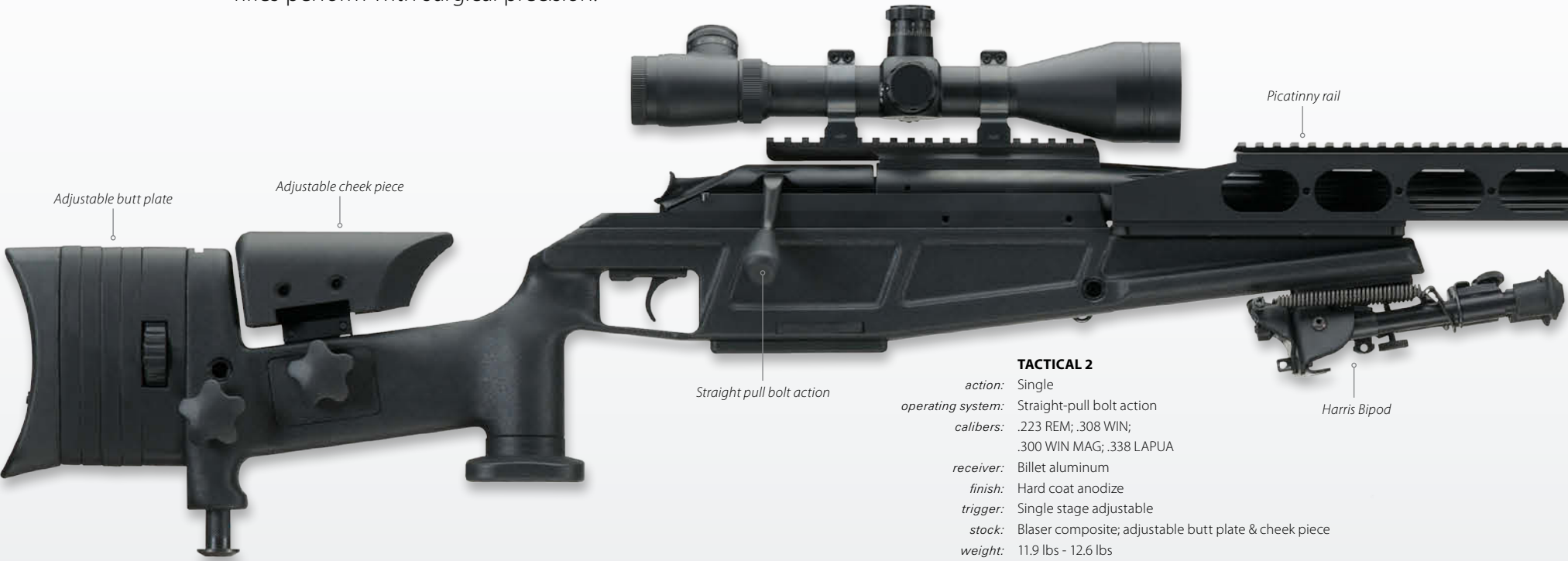
Visit sigsauer.com for complete SIG716 line

Model Specifications: see pages 62-63

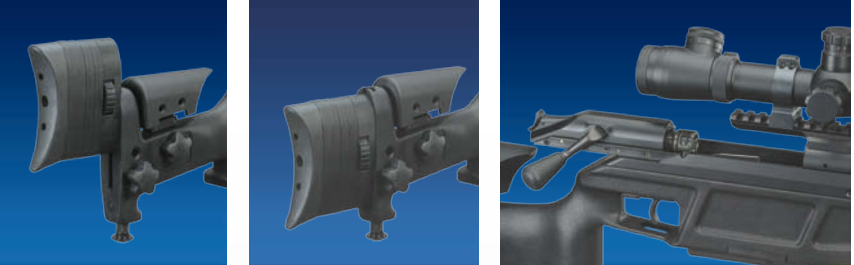
TACTICAL 2™ / SSG 3000™

SINGLE-SHOT CONFIDENCE

Proven in the field by tactical operators around the world, both the straight-pull Tactical 2 and the short-throw bolt SSG 3000 rifles are routinely capable of delivering sub-MOA accuracy. Each comes standard with fully adjustable ergonomic stocks, quick and easy barrel interchangeability that maintains a constant zero and picatinny rail for accessory mounting. Uniquely engineered and exceptionally rugged, these long range rifles perform with surgical precision.



TACTICAL 2
action: Single
operating system: Straight-pull bolt action
calibers: .223 REM; .308 WIN; .300 WIN MAG; .338 LAPUA
receiver: Billet aluminum
finish: Hard coat anodize
trigger: Single stage adjustable
stock: Blaser composite; adjustable butt plate & cheek piece
weight: 11.9 lbs - 12.6 lbs
length: 44.5" - 46.9"
barrel length: 24.7" - 27.0"
magazine: Polymer box
features: 360 degree radial locking bolt head
Caliber interchangeability
Left & right hand operation



The Tactical 2 rifle's high-tech stock is fully adjustable for length-of-pull and comb height. • The bolt head is auto-centering and self-headspacing, locking into a 360-degree collet. • The barrel and bolthead can be swapped out to quickly change calibers.



SSG 3000
action: Single
operating system: Short throw bolt action, 6 lug
calibers: .308 WIN
receiver: Machined steel billet
finish: Black oxide
trigger: Two stage adjustable
stock: McMillan® composite
weight: 12.0 lbs
length: 46.4"
barrel length: 23.5"
magazine: Steel box, 5 round

The SSG 3000 rifle's short throw bolt speeds reloading while the six locking lugs ensure exceptional strength.



SIGSAUER®

SHARED FEATURES

- Fully adjustable tactical stock
- M1913 Picatinny receiver rail
- Adjustable trigger
- Flash suppressor/muzzle brake optional on Tactical 2
- .308 WIN / 7.65 x 45 NATO caliber
- User replaceable cold hammer-forged match grade barrels
- Bipod interface
- Sub-MOA performance

OPTIONAL ACCESSORIES

- Harris Bipod
- Replacement barrels

Visit [sigsauer.com](https://www.sigsauer.com) for complete Tactical 2/SSG 3000 line
Model Specifications: see pages 62-63

SIG SAUER® | PISTOLS

With a hard-earned reputation for cutting edge performance and rock-solid quality, SIG SAUER pistols offer professional and recreational shooters alike, the finest handguns in the world.



P250®

EVERYTHING CHANGES - EXCEPT THE QUALITY

“One out of many” is America’s motto, but an apt motto for the P250 would be “many out of one.” That’s because the P250 can be converted into dozens of configurations to suit the needs and fit the hands of virtually any shooter. With a modular fire control assembly that can be dropped into an assortment of grip module/slide combinations in four different calibers, the P250 can become the one pistol you need it to be.



P250 Caliber X-CHANGE™ Kit

The kit contains everything you need to exploit the P250 modularity and to reconfigure the pistol to any one of three sizes, in full size, compact, or subcompact models. It includes a slide, barrel, recoil spring, medium grip module and magazine and is available in 9mm, .357SIG, .40S&W and .45ACP.

SIGSAUER.COM

P250 SUBCOMPACT

trigger: DAO
sights: SIGLITE® night sights
slide finish: Natural stainless
frame finish: Polymer
calibers: 9mm, .357SIG, .40S&W or .45ACP
features: Slim snag-free profile

P250 FULL SIZE

trigger: DAO
sights: SIGLITE night sights
slide finish: Nitron®
frame finish: Polymer
calibers: 9mm, .357SIG, .40S&W or .45ACP
features: Integral accessory rail

P250 COMPACT

trigger: DAO
sights: SIGLITE night sights
slide finish: Nitron
frame finish: Polymer
calibers: 9mm, .357SIG, .40S&W or .45ACP
features: Integral accessory rail

P250 COMPACT

trigger: DAO
sights: SIGLITE night sights
slide finish: Natural stainless
frame finish: Polymer
calibers: 9mm, .357SIG, .40S&W or .45ACP
features: Integral accessory rail

P250 SUBCOMPACT

trigger: DAO
sights: SIGLITE night sights
slide finish: Nitron
frame finish: Polymer
calibers: 9mm, .357SIG, .40S&W or .45ACP
features: Slim snag-free profile

Takedown in Seconds

1. Make sure the pistol is unloaded.
2. Remove the slide assembly.
3. Remove the takedown lever.
4. Pull back on the hammer, remove the fire control assembly.
5. Ready to reassemble.

SIGSAUER.COM

SIGSAUER®

SHARED FEATURES

- Reversible magazine catch
- Ambidextrous slide catch lever
- Double-Action-Only with consistent 6.5 lb. trigger pull
- Modular system allows easy conversion between full size, compact and subcompact models
- Three different grip sizes to fit any hands on the full size and compact models, and two different grip sizes for the subcompact.
- Available in 9mm, .357SIG, .40S&W and .45ACP

OPTIONAL ACCESSORIES

- Short trigger
- STL-900L rail mounted Light/Laser
- Paddle holster
- Double magazine pouch

Visit sigsauger.com for complete P250 line

Model Specifications: see pages 66-IBC

P250®

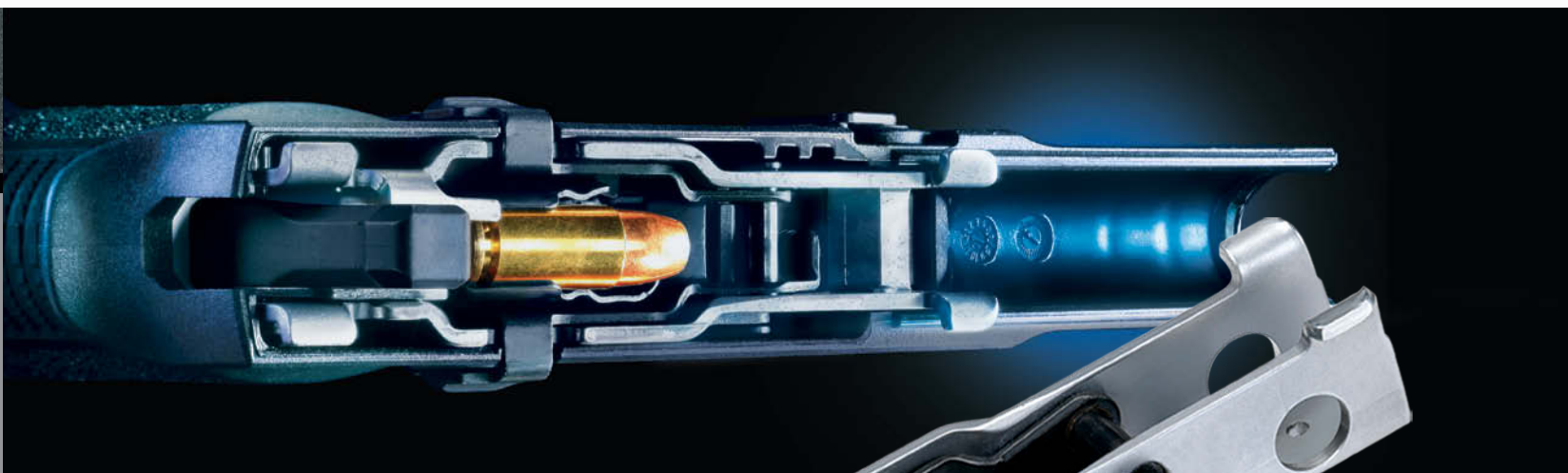
THE DEFINITION OF MODULARITY

Too often, versatility is achieved at the expense of excellence, but not with the P250. The serialized fire control module—the part that makes it a “gun”— can easily be switched between grips of different sizes and different calibers. Instead of one pistol, the P250 owner has a gun that can assume many configurations.



Modular Frame and Fire Control Assembly

The fire control assembly is the heart of the pistol and is serial-numbered. The number is visible through a window in the grip module, regardless of what grip module you choose to use.



Fire control assembly is shown at actual size, seated in the polymer grip module.



P250 Short Trigger *(optional)*
Designed for shooters with smaller hands. Trigger length is shortened to enhance trigger manipulation for better shooting performance.



Fire Control Assembly
The stainless steel fire control assembly contains the parts that actuate the pistol and are contained as a single, modular unit that can be moved from one grip module to another.

FITTED TO THE TASK—AND THE SHOOTER

The two overriding questions that must be asked when purchasing a pistol are: How will it be used, and who is going to use it? The P250 makes those questions much less critical by being adaptable to a variety of tasks and a variety of shooters. It has the ability to be configured in everything from a full sized range pistol to a deep concealment weapon, in any one of four calibers. And, the selection of grip modules, coupled with a standard or short trigger, means it can be fitted to a wide range of hand sizes.



NEW! SIG SAUER P250 2SUM™

You can now get complete out-of-the-box versatility with the SIG SAUER P250 2SUM. This offer provides you with a full size P250, ideal for duty, home defense or sport, and all of the components to rapidly convert it to the P250 Subcompact, a perfect concealed carry gun.

E² ENHANCED ERGONOMICS

A NEW LOOK AND FEEL FOR THE CLASSIC P226® & P229®

SIG SAUER's new E² Enhanced Ergonomics P226 and P229 pistols incorporate a reduced circumference, one-piece modular grip with improved texture. Used in conjunction with other ergonomic innovations including the reduced reach trigger, SRT™ Short Reset Trigger system and more, the E² pistols ergonomically fit a much wider range of hand sizes.



SHARED FEATURES

- "Screwless" modular one piece grip
- Upgraded grip texture
- Reduced backstrap and grip circumference
- Reduced trigger reach
- Short Reset Trigger system
- E² decocking lever
- 15 round flush fit magazine

OPTIONAL ACCESSORIES

- Enhanced slide catch lever for high, two-hand grip
- STL-900L Tactical Light/Laser
- Roto Retention Paddle Holster

Visit sigsauger.com for complete E² line

Model Specifications: see pages 64-IBC

P220®

.45 CALIBER POWER HARNESSSED BY SWISS ENGINEERING

The P220 promotes peace of mind by seamlessly blending power with reliability. Astonishing out-of-the-box accuracy, excellent ergonomics, and exceptional dependability have long made the P220 the gold standard for large caliber, double-action, semi-automatic pistols.



Magazine Pouch
Add firepower to the knock-down power with our .45ACP capacity Magazine Pouch. It's lightweight and no-maintenance, with a paddle for quick attachment or removal.

P220
trigger: DA/SA DAK™ or SAO
sights: Post & dot contrast or SIGLITE® night sights
slide finish: Nitron®
frame finish: Black hard coat anodize
calibers: .45ACP
features: Integral accessory rail



.22LR Rimfire Conversion Kit
Enjoy the fit and feel of your P220 while shooting inexpensive rimfire ammunition with the .22LR Conversion Kit. The kit includes a slide, barrel, recoil spring, and magazine. Just field strip your P220 and reassemble it with the kit's parts.



P220
trigger: DA/SA DAK or SAO
sights: Post & dot contrast or SIGLITE night sights
slide finish: Natural Stainless
frame finish: Black hard coat anodize
calibers: .45ACP
features: Integral accessory rail



P220 COMPACT
trigger: DA/SA
sights: SIGLITE night sights
slide finish: Nitron®
frame finish: Black hard coat anodize
calibers: .45ACP
features: Integral accessory rail



P220 CARRY
trigger: DA/SA DAK or SAO
sights: Post & dot contrast or SIGLITE night sights
slide finish: Natural Stainless
frame finish: Black hard coat anodize
calibers: .45ACP
features: Integral accessory rail

Contrast type, low profile sights are mounted in dovetail slots for adjustment or replacement.
• Accessory rail is now integral to all P220 models. • The compact version enhances the concealability of the proven P220 design.



SHARED FEATURES

- Nitron-coated or natural stainless steel slide
- Black hard coat anodize aluminum frame
- Integral accessory rail
- Available SIGLITE night sights
- 4-point safety system with decocking lever, patented automatic firing pin safety block, safety intercept notch, and trigger bar disconnect.

OPTIONAL ACCESSORIES

- Short Reset Trigger
- .22LR Rimfire Conversion Kit
- STL-900L Tactical Light/Laser
- Double magazine pouch

Visit sigsauger.com for complete P220 line

P220 Specialty Models: see pages 42, 44, 48, 50, 52, 54,
Model Specifications: see pages 64-IBC

P226®

THE STANDARD BY WHICH ALL CONTEMPORARY SIDEARMS ARE MEASURED

The P226 became the most esteemed full size, high-capacity pistol from the moment it was introduced. Time has only enhanced its reputation. The P226 distinguishes itself in the hands of special forces, law enforcement professionals, and discriminating citizens with uncompromising performance when it counts the most.



Roto Retention Holster

This durable contoured black polymer holster features an easy-to-use release system, fully adjustable for cant. Just press the lever and remove the pistol.



SIGSAUER.COM

P226 BLACKWATER TACTICAL

trigger: DA/SA SRT™
sights: TRUGLO® Tritium Fiber Optic front sight, SIGLITE® rear night sight
slide finish: Nitron®
frame finish: Black hard coat anodize
calibers: 9mm
features: Beavertail frame
Front cocking serrations
Blackwater engraving
Polymer magwell grips
(4) super capacity magazines



P226 NAVY

trigger: DA/SA
sights: Post & dot contrast sights
slide finish: Nitron
frame finish: Black hard coat anodize
calibers: 9mm
features: Engraved anchor logo on slide
Anti-corrosion coatings



P226 SCT

trigger: DA/SA
sights: TRUGLO Tritium Fiber Optic front sight, SIGLITE rear night sight
slide finish: Nitron
frame finish: Black hard coat anodize
calibers: 9mm, or .40S&W
features: Front cocking serrations
4 super capacity magazines



A green TRUGLO® fiber optic front sight combines with a SIGLITE night sight rear unit for effective target acquisition under any condition.



P226

trigger: DA/SA DAK™
sights: Post & dot contrast or SIGLITE night sights
slide finish: Natural Stainless
frame finish: Black hard coat anodize
calibers: 9mm, .357SIG or .40S&W
features: Integral accessory rail



P226

trigger: DA/SA DAK
sights: Post & dot contrast or SIGLITE night sights
slide finish: Nitron
frame finish: Black hard coat anodize
calibers: 9mm, .357SIG or .40S&W
features: Integral accessory rail

SIGSAUER.COM

SIGSAUER®

SHARED FEATURES

- Nitron-coated or natural stainless steel slide
- Black hard coat anodize aluminum alloy frame
- Integral accessory rail
- 4-point safety system with decocking lever, patented automatic firing pin safety block, safety intercept notch, and trigger bar disconnecter.

OPTIONAL ACCESSORIES

- Short Reset Trigger
- .22LR Rimfire Conversion Kit
- STL-900L Tactical Light/Laser
- Roto Retention Paddle Holster

Visit sigsauger.com for complete P226 line

P226 Specialty Models: see pages 42, 44, 48, 50, 52.

Model Specifications: see pages 64-IBC

.22LR Rimfire Conversion Kit™

The rimfire conversion kit comes complete with a machined, hard coat-anodized aluminum slide, recoil spring assembly, barrel, and magazine. Installation requires only field stripping of the pistol and reassembly with the kit's components. Adjustable target sights enhance the package.



P229®

AMERICA'S FIRST LINE OF SECURITY

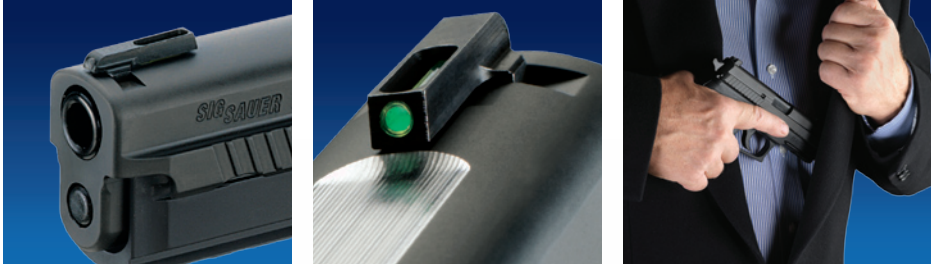
Known from its inception to be superbly accurate and reliable, now include “durable” as proven by over 3 million U.S. Government qualifying test rounds. Carried by numerous federal, state and local agencies, the P229 is a standout performer in helping to protect our skies, oceans, and borders.



P229 SCT
trigger: DA/SA
sights: TRUGLO® Tritium Fiber Optic front sight, SIGLITE® rear night sights
slide finish: Nitron®
frame finish: Black hard coat anodize
calibers: 9mm or .40S&W
features: Front cocking serrations
4 super capacity magazines



STL-100C Mini Tactical Light
Featuring a 5-Watt, high-intensity LED controlled by a 3-position switch, the waterproof STL-100C mounts quickly and comes with a pocket clip, lanyard, pouch and batteries.



Rounded leading edges ease reholstering. • A TRUGLO front sight combines tritium with a fiber optic for use in difficult lighting situations. • Compact dimensions help the P229 carry comfortably and discreetly.



P229 SAS GEN II
trigger: DA/SA SRT™
sights: TRUGLO® Tritium Fiber Optic front sight, SIGLITE® rear night sights
slide finish: Natural Stainless
frame finish: Black hard coat anodize
calibers: 9mm, .357SIG, or .40S&W
features: Radical dehorning (frame & slide)



P229
trigger: DA/SA DAK
sights: Post & dot contrast or SIGLITE night sights
slide finish: Natural Stainless
frame finish: Black hard coat anodize
calibers: 9mm, .357SIG or .40S&W
features: Integral accessory rail



P229
trigger: DA/SA DAK™
sights: Post & dot contrast or SIGLITE night sights
slide finish: Nitron
frame finish: Black hard coat anodize
calibers: 9mm, .357SIG or .40S&W
features: Integral accessory rail



.22LR Rimfire Conversion Kit™
The rimfire conversion kit comes complete with a machined, hard coat-anodized aluminum slide, recoil spring assembly, barrel, and magazine. Installation requires only field stripping of the pistol and then reassemble with the kit's components.



SHARED FEATURES

- Nitron-coated or natural stainless steel slide
- Black hard coat anodize aluminum frame
- Integral accessory rail
- 4-point safety system with decocking lever, patented automatic firing pin safety block, safety intercept notch, and trigger bar disconnecter.

OPTIONAL ACCESSORIES

- Short Reset Trigger
- .22LR Rimfire Conversion Kit
- Mini Tactical light with rail mount
- Roto Retention Paddle Holster

Visit sigsauger.com for complete P229 line

P229 Specialty Models: see pages 44, 48, 52, 54.

Model Specifications: see pages 64-IBC

P239®

THE CLASSIC P239

The P239 takes the design excellence of the P229 and scales it down to create an ideal conceal carry or back-up pistol. Shorter dimensions and a single-stack magazine contribute to a thinner, more discrete profile, without sacrificing caliber choice. Available in 9mm, .357SIG, and .40S&W, it's a SIG Classic without compromise.



P239 TACTICAL
trigger: DA/SA SRT™
sights: SIGLITE® night sights
slide finish: Nitron®
frame finish: Black hard coat anodize
calibers: 9mm
features: Threaded barrel
Front cocking serrations
Slim profile



Roto Retention Holster
This durable contoured black polymer holster features an easy-to-use release system, fully adjustable for cant. Just press the lever and remove the pistol.

Conceal Carry
The P239 was designed for concealment. Nonetheless, it doesn't sacrifice features or handling.



P239 SAS GEN II
trigger: DA/SA SRT
sights: SIGLITE night sights
slide finish: Nitron
frame finish: Black hard coat anodize
calibers: 9mm, .357SIG or .40S&W
features: Dehorned frame and slide
Custom Shop logo engraved on slide



P239
trigger: DA/SA DAK™
sights: Post & dot contrast or SIGLITE night sights
slide finish: Natural Stainless
frame finish: Black hard coat anodize
calibers: 9mm, .357SIG or .40S&W
features: Slim profile



P239
trigger: DA/SA DAK
sights: Post & dot contrast or SIGLITE night sights
slide finish: Nitron
frame finish: Black hard anodize
calibers: 9mm, .357SIG or .40S&W
features: Slim profile



SHARED FEATURES

- Nitron-coated or natural stainless steel slide
- Black hard coat anodize aluminum frame
- SIGLITE night sights
- Slim profile
- 4-point safety system with decocking lever, patented automatic firing pin safety block, safety intercept notch, and trigger bar disconnecter.

OPTIONAL ACCESSORIES

- DAK trigger
- Short Reset Trigger
- Extended extra-capacity magazines
- Roto Retention Paddle holster

Visit sigsauger.com for complete P239 line
P239 Specialty Models: see pages 54.
Model Specifications: see pages 64-IBC

Rounded edges on slide for enhanced conceal carry on SAS models.



P232®

SLEEK, GRACEFUL, ELEGANT AND EFFECTIVE

The P232 blends soft European lines with hard-edged European functionality in a pistol that’s as at home on your hip as it would be on the Orient Express. Light, simple and reliable, it can serve men or women equally, while providing a truly unique companion firearm.



P232
trigger: DA/SA
sights: Post & dot contrast or SIGLITE® night sights
slide finish: Natural stainless
frame finish: Natural stainless
calibers: .380ACP (9mm Short)
features: Hogue finger groove rubber grips
Ultra slim profile for concealment
Excellent balance
Snag-free edges



SIG SAUER® Cable Lock
All handguns ship with California approved cable lock for safe storage.



Despite the compact size of the P232, ergonomics are outstanding.

- SIGLITE nights sights are offered as an option.



P232
trigger: DA/SA
sights: Post & dot contrast or SIGLITE night sights
slide finish: Nitron®
frame finish: Black hard coat anodize
calibers: .380ACP (9mm Short)
features: Ultra slim profile for concealment
Excellent balance
Snag-free edges



P232
trigger: DA/SA
sights: Post & dot contrast or SIGLITE night sights
slide finish: Natural Stainless
frame finish: Natural Stainless
calibers: .380ACP (9mm Short)
features: Ultra slim profile for concealment
Excellent balance
Snag-free edges



P232
trigger: DA/SA
sights: Post & dot contrast or SIGLITE night sights
slide finish: Natural Stainless
frame finish: Black hard coat anodize
calibers: .380ACP (9mm Short)
features: Ultra slim profile for concealment
Excellent balance
Snag-free edges



SHARED FEATURES

- Nitron-coated or natural stainless steel slide
- Black hard anodize aluminum or natural stainless steel frame
- Ergonomically designed, smooth rounded snag-free edges with ultra slim profile.
- Available SIGLITE night sights
- European-style heel magazine release
- 4-point safety system with decocking lever, patented automatic firing pin safety block, safety intercept notch, and trigger bar disconnecter.

OPTIONAL ACCESSORIES

- P232 Paddle Holster with Magazine Pouch

Visit sigsauger.com for complete P232 line

Model Specifications: see pages 64-IBC

Comfortable Hogue finger groove rubber grips. • The P232 is small enough to easily conceal, but big enough to easily grasp.



P238™

REDEFINING CONCEALMENT

Since its introduction in 2009 the P238 has redefined the role of a .380ACP caliber pistol for personal protection or as a back-up gun. Slim and light-weight with drift adjustable sights, concealed carry doesn't get any better. Now available in a whole host of new models, the P238 offers unmistakable quality in an all metal pistol.



NEW P238 BLACKWOOD
trigger: SAO
sights: SIGLITE® night sights
slide finish: Natural stainless
frame finish: Black hard coat anodize
calibers: .380ACP (9mm Short)
features: Custom Blackwood grips
Ultra slim profile for concealment



NEW P238 ROSEWOOD
trigger: SAO
sights: SIGLITE night sights
slide finish: Nitron
frame finish: Black hard coat anodize
calibers: .380ACP (9mm Short)
features: Checkered rosewood grips
Lightweight aluminum frame



Weighing under a pound, the P238 fits the smallest of handbags for concealment • Solid target style trigger
• SIGLITE night sights are for improved low-light aiming.



NEW P238 EQUINOX
trigger: SAO
sights: TRUGLO® tritium fiber optic front sight, SIGLITE rear sight
slide finish: Two-Tone with flat top
frame finish: Black hard coat anodize
calibers: .380ACP (9mm Short)
features: Custom Shop wood grips
Ultra slim profile for concealment
Nickel controls



NEW P238 RAINBOW
trigger: SAO
sights: SIGLITE night sights
slide finish: Rainbow titanium
frame finish: Black hard coat anodize
calibers: .380ACP (9mm Short)
features: Custom Rosewood grips
Ultra slim profile for concealment



P238
trigger: SAO
sights: SIGLITE night sights
slide finish: Nitron®
frame finish: Black hard coat anodize
calibers: .380ACP (9mm Short)
features: Black polymer grips
Ultra slim profile for concealment



NEW P238 SAS
trigger: SAO
sights: SIGLITE night sights
slide finish: Natural stainless
frame finish: Black hard coat anodize
calibers: .380ACP (9mm Short)
features: Custom wood grips
Dehorned frame and slide
Ultra slim profile for concealment



SHARED FEATURES

- Single action only
- Locked breech mechanism
- Frame mounted thumb safety
- Nitron coated or natural stainless steel slide
- 7075-T6 Aircraft grade aluminum frame with black hard coat anodize finish
- Drift adjustable sights
- 6+1 capacity

OPTIONAL ACCESSORIES

- Concealment Holster
- Replacement Grips (wood, aluminum, G10)
- Tactical Laser

Visit sigsauger.com for complete P238 line
Model Specifications: see pages 64-IBC



NEW P238 TACTICAL LASER
trigger: SAO
sights: SIGLITE night sights
slide finish: Natural stainless
frame finish: Black hard coat anodize
calibers: .380ACP (9mm Short)
features: Custom aluminum grips
Tactical laser



1911

AMERICAN INGENUITY MEETS EUROPEAN REFINEMENT

The legendary 1911 design has been brought into the 21st century with the refinement today’s shooters demand. The SIG SAUER® 1911 proves that close tolerances equal complete reliability and need not be incompatible in an off-the-shelf pistol. SIG SAUER has introduced clean, distinct lines that American shooters have embraced, while retaining the crisp trigger pull, classic ergonomics, and exceptional accuracy they expect.

STL-900L Tactical Light & Laser™

The STL-900L is a combination tactical light and laser unit designed to fit on dustcover accessory rails. The unit features a high-output LED white light and a high-intensity red laser, both of which can be used in concert with each other or independently.

1911 BLACKWATER

- trigger:* SAO
- sights:* Novak® night sights
- slide finish:* Nitron®
- frame finish:* Nitron
- calibers:* .45ACP
- features:* Integral accessory rail
Ambidextrous safety
Magwell
Blackwater engraving
Custom Blackwater wood grips



1911

- trigger:* SAO
- sights:* Novak night sights
- slide finish:* Nitron
- frame finish:* Nitron
- calibers:* .45ACP
- features:* Custom Rosewood grips

1911 C3

- trigger:* SAO
- sights:* Novak night sights
- slide finish:* Natural Stainless
- frame finish:* Black hard coat anodize
- calibers:* .45ACP
- features:* Slim profile custom rosewood grips
Compact alloy frame
Short slide

1911 CARRY

- trigger:* SAO
- sights:* Novak night sights
- slide finish:* Natural stainless
- frame finish:* Natural stainless
- calibers:* .45ACP
- features:* Custom Diamondwood grips
Full size frame
Short slide

1911

- trigger:* SAO
- sights:* Novak night sights
- slide finish:* Natural stainless
- frame finish:* Natural stainless
- calibers:* .45ACP
- features:* Integral accessory rail
Custom Diamondwood grips

1911 STX

- trigger:* SAO
- sights:* Adjustable combat night sights
- slide finish:* Nitron
- frame finish:* Natural Stainless
- calibers:* .45ACP
- features:* Burled Maple grips
Ambidextrous safety
Magwell
Flat Top

SHARED FEATURES

- Single action only
- Nitron-coated or natural stainless steel slide
- Black hard coat anodize aluminum or natural stainless or Nitron steel frame
- Novak night sights on selected models
- Extended thumb saftey

OPTIONAL ACCESSORIES

- Custom Grips
- STL-900L Tactical Light/Laser
- Roto Retention Paddle Holster

Visit sigsauer.com for complete 1911 line

1911 Specialty Models: see page 42, 48

Complete Model Specifications: see pages 64-IBC

COMPETITION SHOOTING

MAX MICHEL, JR. – CHAMPION

Five-time USPSA® National Champion and three-time World Speed Shooting Champion Max Michel, Jr. has joined SIG SAUER® as Captain of the SIG SAUER Shooting Team and Manager of Competitive Shooting Activities.

LEADERSHIP AND PERFORMANCE

SIG SAUER recently signed top Practical Shooting competitor Max Michel, Jr. to lead the company’s shooting team and to serve as SIG SAUER’s Manager of Competitive Shooting Activities. Michel is a veteran of the U.S. Army Shooting Team and past Practical Shooting champion. He brings immeasurable skills, know-how and insight to the company.

Beginning in 2004, Michel won five USPSA National Championships. He also won three World Speed Shooting Championships in 2005 and 2007. He has won 30 USPSA Area Championships and has represented the United States in the last four International Practical Shooting Confederation® (IPSC) World Shoots where he earned gold medals. Since 1999, he has regularly been sought out by the U.S. Army Marksmanship Unit (USAMU) and has been both an army shooter and trainer. Prior to joining SIG SAUER, Staff Sergeant Michel served as the Military Coach of the Action Pistol Team.



Michel is no stranger to victory, having won seven national titles and three world titles. His performance in competition promotes the SIG SAUER marque, while his insights aid in the development of everything from hardware to shooting techniques.



His involvement with SIG SAUER includes competing in shooting events, USPSA and IDPA, as the team captain and managing the company’s involvement in the competitive shooting market. Michel works with other shooters and handles shoot sponsorships and the company’s co-marketing efforts. He also works with SIG SAUER Product Managers to better anticipate and respond to the demands of the competitive sports firearms market. Additionally, Michel teaches select courses at the prestigious SIG SAUER Academy as a member of that facility’s highly esteemed faculty.



Michel brings 12 years of experience and a resume rich in achievement to the SIG SAUER Shooting Team. His expertise will benefit the product line and SIG SAUER Academy, as well as the team.

MATCH RESULTS

2009	
Pan American Championship	1st Place Overall
Area 1 Championship	1st Place Overall
Area 4 Championship	1st Place Overall
Area 5 Championship	2nd Place Overall
Area 6 Championship	1st Place Overall
Pro-Am Challenge Championship	4th Place Overall
US Steel Nationals Championship	1st Place Overall
FL Open Championship	1st Place Overall
USPSA Open Lim-10 National Championship	4th Place Overall
USPSA Open National Championship	1st Place Overall
World Speed Shooting Championship	1st Place Overall
2008	
IPSC World Shoot XV	3rd Place Overall
USPSA Open National Championship	2nd Place Overall
World Speed Shooting Championship	4th Place Overall
CO State Steel Challenge Championship	1st Place Overall
Area 5 Championship	1st Place Overall
Area 6 Championship	1st Place Overall
Area 7 Championship	1st Place Overall
FL Open Championship	1st Place Overall
US Steel Challenge National Championship	1st Place Overall

TARGET

THE TURN-KEY TARGET GUN

Competitive from the get-go, the P226®, P220® based X-Series and 1911 Target stainless have the features to put you in the X-circle as well as the winner’s circle. Specialized features include factory tuned triggers, 5” or 6” slides and barrels, unique ergonomic grips on some models, beavertail frames, integral magazine well and ambidextrous thumb safety.



NEW P226 X-SIX™
trigger: SAO
sights: Adjustable target sights
slide finish: Natural stainless
frame finish: Natural stainless
calibers: 9mm
features: Magwell
Beavertail frame
Front cocking serrations
Thumb safety
Adjustable single action trigger
Custom wood grips

SIGSAUER.COM



P226 X-FIVE™ ALLROUND
trigger: DA/SA
sights: Adjustable target sights
slide finish: Natural stainless
frame finish: Natural stainless
calibers: 9mm or .40S&W
features: Beavertail frame
Front cocking serrations
IPSC production approved



P226 X-FIVE COMPETITION
trigger: SAO
sights: Adjustable target sights
slide finish: Natural stainless
frame finish: Natural stainless
calibers: 9mm or .40S&W
features: Magwell
Beavertail frame
Front cocking serrations
Ambidextrous thumb safety



P226 USPSA™
trigger: DA/SA SRT™
sights: Dawson® fiber optic front sight, Warren® tactical rear sight
slide finish: Nitron
frame finish: Black hard coat anodize
calibers: 9mm
features: Short Reset Trigger
Beavertail frame
Front cocking serrations



P220® MATCH
trigger: DA/SA
sights: Adjustable target sights
slide finish: Natural Stainless
frame finish: Black hard coat anodize
calibers: .45ACP
features: Black polymer factory grips
Integral accessory rail
Front cocking serrations



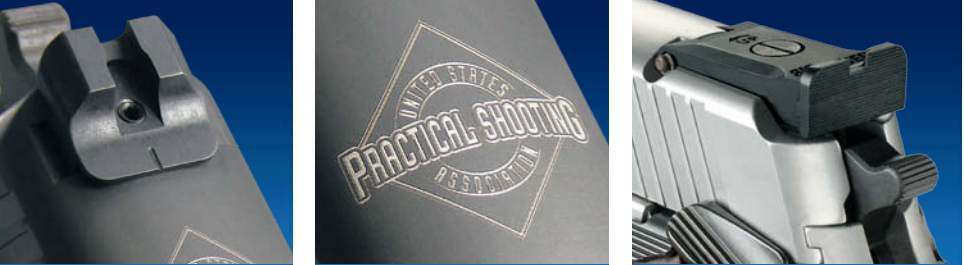
P220 X-SIX
trigger: SAO
sights: Adjustable target sights
slide finish: Natural stainless
frame finish: Natural stainless
calibers: .45ACP
features: Front cocking serrations
Adjustable single action trigger
Thumb safety



P220 SUPERMATCH
trigger: SAO
sights: Adjustable target sights
slide finish: Natural Stainless
frame finish: Black hard coat anodize
calibers: .45ACP
features: Custom Rosewood grips
Integral accessory rail
Beavertail frame
Front cocking serrations



1911 TARGET
trigger: SAO
sights: Adjustable target night sights
slide finish: Natural Stainless
frame finish: Natural Stainless
calibers: .45ACP
features: Custom Diamondwood grips
Beavertail frame
Match grade barrel



The P226 USPSA Edition is distinguished by a Warren Tactical® rear sight and laser-engraved USPSA logo. • Other X-Series pistols feature SIG SAUER® target sights for precision adjustment and maximum accuracy potential.

SIGSAUER®

SHARED FEATURES

- Adjustable target sights (except on USPSA)
- Nitron-coated or natural stainless steel slide
- Nitron-coated or natural stainless or black hard coat anodize aluminum frame
- Front cocking serrations (except 1911 Target Stainless)

OPTIONAL ACCESSORIES

- Custom Grips (1911 only)
- Paddle holster fits (P226 USPSA and 1911 only)
- STL-900L Tactical Light/Laser
- Mini Red Dot Sight with Bridge Mount

Visit sigsauger.com for complete Target line

Model Specifications: see pages 64-IBC

CLASSIC .22'S

FIT AND FEEL, RIMFIRE COST AND COMFORT

SIG SAUER® Classic .22's offer the size, feel, and controls of the company's classic centerfire pistols chambered in fun, affordable .22LR. Now you can practice your marksmanship and gun handling without the noise, recoil, and expense of centerfire ammunition. Moreover, they fit the holsters and accessories of their centerfire counterparts.



Short Trigger

Designed for shooters with small hands to enhance trigger manipulation for better shooting performance.

SIGSAUER.COM



P226®

trigger: DA/SA
sights: Adjustable
slide finish: Black anodize
frame finish: Black hard coat anodize
calibers: .22LR
features: Integral accessory rail



P220®

trigger: DA/SA
sights: Adjustable
slide finish: Black anodize
frame finish: Black hard coat anodize
calibers: .22LR
features: Integral accessory rail



P229®

trigger: DA/SA
sights: Adjustable
slide finish: Black anodize
frame finish: Black hard coat anodize
calibers: .22LR
features: Integral accessory rail

SIGSAUER.COM

Centerfire X-CHANGE™ Kit

Simply by swapping the slide, barrel, recoil system, and magazine of a Classic .22 with those centerfire components found in the kit, shooters can convert their .22LR rimfire pistol to centerfire quickly and affordably.



SHARED FEATURES

- Black anodize aluminum slide
- Adjustable sights
- Integral accessory rail
- 4-point safety system with decocking lever, patented automatic firing pin safety block, safety intercept notch, and trigger bar disconnecter.

OPTIONAL ACCESSORIES

- Centerfire X-CHANGE Kit
- STL-900L Tactical Light/Laser
- Short Reset trigger
- Mini Red Dot Sight with Bridge Mount

Visit sigsauger.com for complete Classic .22LR line

Model Specifications: see pages 64-IBC

Shoot all day at the range perfecting your shooting skills using affordable .22LR ammo.



MOSQUITO®

SOMETIMES THE BUZZ IS GOOD

The buzz about the SIG SAUER® Mosquito, is that–this scaled down, rimfire version of the company’s popular P226® reduces the noise, recoil and expense of centerfire shooting but keeps the accuracy, precision and exhilaration the same. The polymer frame, blowback-operated pistol is offered in a wide range of configurations.



Roto Retention Paddle Holster with Integrated Magazine Pouch

Lightweight and maintenance-free, this easy on/off holster has an ergonomic retention system, an integral mag pouch, and is fully adjustable for cant.

SIGSAUER.COM

MOSQUITO REVERSE TWO-TONE

trigger: DA/SA
sights: Adjustable sights
slide finish: Blued
frame finish: Polymer with bright finish
calibers: .22LR
features: Integral safety lock



MOSQUITO SPORT

trigger: DA/SA
sights: Adjustable sights
slide finish: Blued
frame finish: Polymer
calibers: .22LR
features: Barrel weight
Integral safety lock



MOSQUITO

trigger: DA/SA
sights: Adjustable sights
slide finish: Blued
frame finish: Polymer
calibers: .22LR
features: Integral safety lock



MOSQUITO PINK

trigger: DA/SA
sights: Adjustable sights
slide finish: Blued
frame finish: Pink finish
calibers: .22LR
features: Integral safety lock



MOSQUITO TB

trigger: DA/SA
sights: Adjustable sights
slide finish: Blued
frame finish: Polymer
calibers: .22LR
features: Threaded barrel
Optional tactical trainer package
Integral safety lock



MOSQUITO TWO-TONE

trigger: DA/SA
sights: Adjustable sights
slide finish: Natural Stainless
frame finish: Polymer
calibers: .22LR
features: Integral safety lock

SIGSAUER.COM



The threaded barrel on the TB model accepts a functional sound suppressor or the Tactical Trainer package.

SIGSAUER®

SHARED FEATURES

- Blued slide
- Lightweight, low-maintenance polymer frame
- Adjustable sights
- Economical .22LR caliber
- Integral accessory rail
- Slide mounted manual safety
- Magazine safety disconnect
- Integral safety lock

OPTIONAL ACCESSORIES

- Trainer Package, with non-functional surpressor for TB model
- Mosquito Bridge Mount and separate Mini Red Dot sight
- STL-900L Tatical Light/Laser
- Roto Retension Paddle Holster with mag pouch

Visit sigsauger.com for complete Mosquito line

Model Specifications: see pages 64-IBC



MOSQUITO Bridge Mount

The optional Bridge Mount provides a stable platform for various sighting systems, including the Mini Red Dot sight, also optional.

ELITE

SOMETIMES EXCELLENCE JUST ISN'T ENOUGH

While SIG SAUER® pistols are functionally flawless right out-of-the-box, some shooters can't resist taking things up a notch. For them, SIG SAUER offers the Elite series, four of our most popular models tricked out with all the features a shooter could want, from beavertails to custom grips and more.



STL-900L Tactical Light & Laser

The integral accessory rail on Elite pistols (except the 1911 Platinum Elite Carry) allows fast and easy installation of accessories including the STL-900L Tactical Light and Laser.

SIGSAUER.COM

- P226 ELITE**
trigger: DA/SA SRT™
sights: SIGLITE® night sights
slide finish: Nitron®
frame finish: Black hard coat anodize
calibers: 9mm or .40S&W
features: Integral accessory rail
Custom Rosewood grips
Front cocking serrations



- P220 CARRY ELITE DARK**
trigger: DA/SA SRT
sights: Adjustable combat night sights
slide finish: Nitron
frame finish: Black hard coat anodize
calibers: .45ACP
features: Integral accessory rail
Front cocking serrations
Black anodized aluminum grips

- .22LR Rimfire Conversion Kit™**
Most Elite series pistols can be readily converted to fire mild, inexpensive rimfire ammunition with the .22LR Conversion Kit. Just replace your original components with the included slide, barrel, recoil system and magazine.



- P229 ELITE DARK**
trigger: DA/SA SRT
sights: Adjustable combat night sights
slide finish: Nitron
frame finish: Black hard coat anodize
calibers: 9mm, .357SIG or .40S&W
features: Integral accessory rail
Front cocking serrations
Threaded barrel (9mm only)
Black anodized aluminum grips



- P220 STAINLESS ELITE**
trigger: DA/SA SRT
sights: SIGLITE night sights
slide finish: Natural Stainless
frame finish: Natural Stainless
calibers: .45ACP
features: Integral accessory rail
Custom Rosewood grips
Front cocking serrations

SIGSAUER.COM



SHARED FEATURES

- SIGLITE night sights
- Nitron-coated or natural stainless steel slide; front cocking serrations
- Natural stainless steel or black hard coat anodize aluminum beavertail frame with front strap checkering
- Custom grips
- 4-point safety system with patented automatic firing pin lock, frame-mounted decocking lever, safety intercept notch, and trigger bar disconnecter
- Short Reset Trigger (except on 1911 Platinum Elite Carry)

OPTIONAL ACCESSORIES

- .22LR Rimfire Conversion Kit
- STL-900L Tactical Light/Laser

Visit sigsauger.com for complete Elite line

Model Specifications: see pages 64-IBC



- 1911 PLATINUM ELITE CARRY**
trigger: SAO
sights: Adjustable combat night sights
slide finish: Natural Stainless, polished duotone finish
frame finish: Nitron
calibers: .45ACP
features: Full size stainless frame
Compact slide
Stainless controls
Custom aluminum grips



COMBAT

MADE TO ORDER

The Combat series pistols are full-size guns decked out in corrosion-resistant Mil-Spec finishes and incorporating those features demanded by savvy operators. With SIGLITE® night sights, an integral M1913 Picatinny rail and a choice of conventional or suppressor-ready threaded barrel, SIG SAUER® Combat series pistols are mission-ready.



P226 COMBAT TB
trigger: DA/SA
sights: SIGLITE® night sights
slide finish: Nitron®
frame finish: Flat Dark Earth hard coat anodize
calibers: 9MM
features: Anti-corrosion coatings
Threaded barrel, hard chromed and finished in phosphate
M1913 Picatinny rail
Flat Dark Earth polymer grips
Front cocking serrations



STL-900L Tactical Light & Laser
The quick-attaching STL-900L, with its combination of tactical light and laser, enhances the ready-for-anything attitude of the Combat series.



All threaded barrel versions are shipped with protective caps which can be used when a suppressor isn't installed. • All Combat series pistols include SIGLITE® night sights.



P220 COMBAT TB
trigger: DA/SA
sights: SIGLITE night sight
slide finish: Nitron
frame finish: Flat Dark Earth hard coat anodize
calibers: .45ACP
features: Anti-corrosion coatings
Threaded barrel, hard chromed and finished in phosphate
M1913 Picatinny rail
Flat Dark Earth polymer grips



P220 COMBAT
trigger: DA/SA
sights: SIGLITE night sight
slide finish: Nitron
frame finish: Flat Dark Earth hard coat anodize
calibers: .45ACP
features: Anti-corrosion coatings
Barrel hard chromed and finished in phosphate
M1913 Picatinny rail
Flat Dark Earth polymer grips



P226 COMBAT
trigger: DA/SA
sights: SIGLITE night sight
slide finish: Nitron
frame finish: Flat Dark Earth hard coat anodize
calibers: 9mm
features: Anti-corrosion coatings
Barrel hard chromed and finished in phosphate
M1913 Picatinny rail
Flat Dark Earth polymer grips



SHARED FEATURES

- Nitron-coated stainless steel slide
- Flat Dark Earth hard coat anodize aluminum frame
- Integral accessory rail
- SIGLITE night sights
- Hard-chromed and Nitron finished barrels
- 4-point safety system with decocking lever, patented automatic firing pin safety block, safety intercept notch, and trigger bar disconnecter.

OPTIONAL ACCESSORIES

- Short Reset Trigger
- .22LR Rimfire Conversion Kit
- STL-900L Tactical Light/Laser

Visit sigsauger.com for complete Combat line
Model Specifications: see pages 64-IBC

.22LR Rimfire Conversion Kit™

By swapping out the original slide, barrel, recoil system, and magazine for those contained in the .22LR Rimfire X-CHANGE Kit, Combat series owners can stay sharp training with mild and inexpensive rimfire ammunition.

EQUINOX®

BECAUSE BEAUTY AND FUNCTIONALITY AREN'T MUTUALLY EXCLUSIVE

SIG SAUER® pistols have long provided their owners with peace of mind. Now the SIG SAUER Custom Shop Equinox series adds pride of ownership to that feeling. The distinctive polished slide flats and nickel controls contrast with the dark-coated surfaces for a visually arresting two-tone appearance. When combined with its practical features, the Equinox series is pretty to look at and beautiful to shoot.

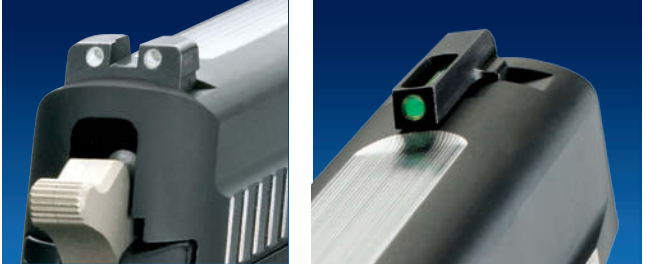


P229® EQUINOX
trigger: DA/SA
sights: TRUGLO® tritium fiber optic front sight, SIGLITE® rear sight
slide finish: Two-Tone with flat top
frame finish: Black hard coat anodize
calibers: .40S&W
features: Custom Shop wood grips
Integral accessory rail
Nickel controls



SIG SAUER Hearing Protection
Ideal for any shooting situation. Highly effective protection, lightweight and optimal comfort.

SIGSAUER.COM



All Equinox pistols come with TRUGLO® Fiber Optic (front) and SIGLITE® night sights (rear). • The nickel components stand out against the dark frame while custom grips complete the package.



P220® EQUINOX
trigger: DA/SA
sights: TRUGLO tritium fiber optic front sight, SIGLITE rear sights
slide finish: Two-Tone with flat top
frame finish: Black hard coat anodize
calibers: .45ACP
features: Custom Shop wood grips
Integral accessory rail
Nickel controls



P220® CARRY EQUINOX
trigger: DA/SA SRT®
sights: TRUGLO tritium fiber optic front sight, SIGLITE rear sights
slide finish: Two-Tone with flat top
frame finish: Black hard coat anodize
calibers: .45ACP
features: Custom Shop wood grips
Integral accessory rail
Nickel controls



P226® EQUINOX
trigger: SAO DA/SA
sights: TRUGLO tritium fiber optic front sight, SIGLITE rear sights
slide finish: Two-Tone with flat top
frame finish: Black hard coat anodize
calibers: .40S&W
features: Custom Shop wood grips
Integral accessory rail
Nickel controls



P238™ EQUINOX
trigger: SAO
sights: TRUGLO tritium fiber optic front sight, SIGLITE rear sights
slide finish: Two-Tone with flat top
frame finish: Black hard coat anodize
calibers: .380ACP (9mm short)
features: Custom Shop wood grips
Nickel controls



SHARED FEATURES

- Two-Tone Nitron coated flat top slide with ground slide flats
- Black hard coat anodize aluminum frame
- TRUGLO tritium fiber optic front sight, SIGLITE rear sights
- Integral accessory rail (except on P238 Equinox)
- Custom Shop grips
- 4-point safety system with decocking lever, patented automatic firing pin safety block, safety intercept notch, and trigger bar disconnecter

OPTIONAL ACCESSORIES

- .22LR Conversion Kit (except P238)
- STL-900L Tactical Light/Laser (except P238)

Visit sigsauger.com for complete Equinox line

Model Specifications: see pages 64-IBC

Custom Shop Grips

Installation of distinctive grips is but one of the services available from the Custom Shop. From custom gunsmithing to complete refurbishing (or just routine maintenance), the Custom Shop ensures you get the SIG SAUER you want just the way you want it.



SAS™ GEN II

HIT YOUR TARGET, NOT A SNAG

SIG SAUER® SAS GEN II pistols are three of our most popular carry guns optimized for concealment. Whether you need a flat, single-stack pistol, a compact high-capacity gun, or something in a large caliber that’s concealable — the SAS GEN II will present smoothly, thanks to thorough dehorning that provides a snag-free profile.



Threaded Barrel
Optional threaded barrels are available in 9mm, and .45ACP.

- P239® SAS GEN II**
trigger: DA/SA SRT™
sights: SIGLITE® night sights
slide finish: Natural stainless
frame finish: Black hard coat anodize
calibers: 9mm, .357SIG or .40S&W
features: Dehorned frame & slide
Ultra smooth, snag-free profile
Custom Shop logo engraved on slide



- P239 SAS GEN II**
trigger: DA/SA SRT™
sights: SIGLITE® night sights
slide finish: Nitron®
frame finish: Black hard coat anodize
calibers: 9mm, .357SIG or .40S&W
features: Dehorned frame & slide
Ultra smooth, snag-free profile
Custom Shop logo engraved on slide



- P220® CARRY SAS GEN II**
trigger: DA/SA SRT
sights: SIGLITE night sights
slide finish: Nitron
frame finish: Black hard coat anodize
calibers: .45ACP
features: Dehorned frame & slide
Ultra smooth, snag-free profile
Custom Shop logo engraved on slide



All sharp edges are broken and rounded to prevent snags. • The beveled slide face eases reholstering. • The slide’s flats are engraved with the Custom Shop logo.

SHARED FEATURES

- DA/SA SRT trigger
- Nitron-coated or natural stainless steel slide
- Black hard coat anodize aluminum frame
- Dehorned slide and frame
- SIGLITE night sights
- Custom Shop logo engraved on slide
- 4-point safety system with decocking lever, patented automatic firing pin safety block, safety intercept notch, and trigger bar disconnecter.
- Short Reset Trigger

OPTIONAL ACCESSORIES

- .22LR Rimfire Conversion Kit (except P239)

Visit sigsauger.com for complete SAS GEN II line

Model Specifications: see pages 64-IBC

SIG SAUER Armorer Tool Kit

This kit comes complete with all the tools an armorer needs to detail strip SIG SAUER pistols for minor repairs, routine maintenance, and parts replacement, all in a handy, self-contained carrying case.



SIG SAUER ACADEMY™

WHERE THE PROFESSIONALS TRAIN

Since 1990 SIG SAUER Academy has been on the leading edge of training for both armed professionals and responsible citizens. Combining classroom theory reinforced with live-fire training, the Academy promotes conflict survival and resolution through both knowledge and skills acquisition



SIG SAUER DVDS

SIG SAUER DVDs offer a convenient means of guiding your self-defense training and reinforcing the principles taught at SIG SAUER Academy. The presentations by SIG SAUER professionals will help hone and maintain your tactical skill set.

SIG SAUER ACADEMY™ COURSES

Experienced professionals and responsible citizens look to SIG SAUER Academy for quality instruction. With the ability to adapt training to suit a particular mission or a student's abilities, SIG SAUER Academy offers a broad selection of training that will make any student a better shooter, guaranteed.

INSTRUCTOR DEVELOPMENT

The SIG SAUER ACADEMY Instructor certification is a coveted achievement recognized by many state police standards and training boards. Valid for three years, each course allows the student to establish a reproducible training foundation. Instructor certification courses include Force-on-Force, Range Master, Shotgun, AirSoft, Active Shooter, Patrol Rifle, Master Firearms Trainer, and more.

SKILL DEVELOPMENT

Select courses were researched and developed by the SIG SAUER ACADEMY to strengthen the armed professional's skill set. Designed to better the daily execution of a professional's responsibilities, these courses focus on skills including close quarters tactics, executive protection and sniping, as well as operational tactics and techniques.

In addition to the latest training for uniformed professionals, the SIG SAUER ACADEMY has committed itself to offering the best training for responsible citizens. Regardless of the skill level, student's abilities are acknowledged and training and development proceed appropriately. Foundational classes teach or refresh basic knowledge in shooting rifles, pistols, or shotguns. Shooters wishing to be competitive in the practical shooting community can hone their skills in a course that is specifically developed for a number of disciplines, while those wishing to enhance their civil awareness skills can take a defensive firearms or concealed carry course. Hunters and survivalists can also benefit from a comprehensive course covering skills including land navigation and hunting with a handgun.

ARMORER CERTIFICATION

Factory-authorized maintenance to a SIG SAUER product can only come from someone with a SIG SAUER ACADEMY armorer certification. Each course takes a hands-on approach with exercises in troubleshooting, disassembly and reassembly procedures, and techniques. The process results in a learning experience that builds retention of the course materials, and a factory certification valid for 3 years.

INTERACTIVE ARMORER INSTRUCTION CDS

These CDs are the latest training tools produced by the SIG SAUER ACADEMY. The courses are comprehensive lessons taking viewers through each step of disassembly and reassembly using 3-D graphics. The graphic elements offered throughout the video bring a level of understanding that is rarely achieved by conventional methods of instruction. The viewer can rotate and zoom on any axis for a detailed look at parts and operation. These lessons make for an indispensable reference tool or a valuable refresher following a formal SIG SAUER ACADEMY armorer certification course.



CONTACT

For more information on the SIG SAUER ACADEMY and a complete listing of courses, visit www.sigsaueracademy.com or call (603) 679-2003.



Academy offerings can improve anyone's firearm-handling skills, including tactical law enforcement personnel, responsible citizens, competitive shooters and hunters/outdoorsmen.

CONVERSION KITS

MAXIMIZE THE PERFORMANCE

SIG SAUER® conversion kits offer a fast, convenient, affordable way to add to your shooting enjoyment by providing caliber interchangeability. Shoot either centerfire or rimfire, while retaining the feel and performance of your favorite SIG SAUER pistol.



P250® Caliber X-CHANGE™ Kit

The modular P250 allows you to select any of several centerfire calibers. Just disassemble the pistol and reassemble it with the X-CHANGE Kit's barrel/slide assembly, grip module, and magazine. Kits are available in full, compact or subcompact in 9mm, .357SIG, .40S&W and .45ACP.

Features

- Slide (Stainless or Nitron® finish)
- Grip module assembly
- Recoil Spring and Guide
- SIGLITE® Night Sights
- Magazine included



Centerfire X-CHANGE™ Kit

Add the spice of variety to your shooting by converting to a different caliber. Just swap out your standard slide/barrel assembly and magazine for those of the Centerfire X-CHANGE Kit. Available in 9mm, .357SIG, .40S&W and .45ACP.

Features

- Slide with Nitron finish
- Recoil Spring and Guide
- SIGLITE Night Sights
- Magazine included



.22LR Rimfire Conversion Kit

Converting your pistol to rimfire makes practice affordable while also allowing you to use a familiar gun. Moreover, as a .22LR, it works well for .22LR-cal. bullseye matches and training new shooters. The kit is available for the P220R™, P226R™, P229R™ and P228/P229.

Features

- Black anodized aluminum slide
- Recoil Spring and Guide
- Adjustable target sights
- .22LR magazine included



ACCESSORIES

BRIGHT IDEAS AND MORE...

Top off your favorite firearm with genuine SIG SAUER® accessories to enhance that same high level of precision and functionality.

Bridge Mount



STL-081™
Mini Red Dot Sight



STL-300J STOPLITE®
Tactical Light & Laser

An all-in-one unit that combines a vertical foregrip for enhanced control with a laser module for fast, precise aiming and a high-output 700-lumen* white light. The light aids in low-light target identification or, in strobe mode, is powerful enough to constitute a force option in and of itself. A built-in power receptacle permits the use of additional accessories.

**Approximate lumens*



Rotary Diopter Sight



STL-900L™
Tactical Laser & Light



STL-100C™
Mini Tactical Light



STL-100™
Tactical Light



G-LAD
Green Tactical Laser Aiming Device



Roto Retention Paddle Holster

Lightweight, durable and maintenance-free, the Roto Retention paddle holster includes a retention device and user-adjustable degree of rake. It is available for the P220, P226, P229, P239, 1911, and P250.



Roto Retention Paddle Holster with Integrated Magazine Pouch

The first and only SIG SAUER® holster with a mag pouch built in. Available for the P232 and Mosquito model pistols.



Double Magazine Pouch



SIG SAUER Competition Range Bag

Woven of durable 600-denier black polyester with a contrasting blue embroidered SIG SAUER logo.



Factory Magazines



Double AR Magazines
30 round

FACTORY MAGAZINES

Select from a full range of precision-built pistol & rifle magazines in different calibers and capacities.

FIREARMS		CALIBERS AND AVAILBALE MAGAZINES CAPACITIES								
Models	.22LR	.380ACP	9mm	.40S&W	.357SIG	.45ACP	5.56mm/ .223Rem	7.62mm/ .308Win	.300WinMag	.338Lapua
1911 / 1911 Carry						8				
1911 Comp						7				
P220® / P220 Carry	10					8/10				
P220Comp / P245™						6				
P225®			8							
P226®	10		10/15/18/19/20	10/12/14/15	10/12/14/15					
P228™	10		10/13/15/17							
P229®	10		10/13/15/17	10/12/14	10/12/14					
P232™		7								
P238™		6								
P239®			8	7	7/8					
P250® F			17	14	14	10				
P250 C			10/15	10/13	10/13	9				
P250 SC			12	10	10	6				
SP2022®			10/15	10/12	10/12					
Mosquito®	10									
SIG556®/P556™/SIG516™							10/20/30			
SIG522/P522	10/25									
SIG716™								10/20		
SSG 3000™								5		
Tactical 2™							5	5	4	4



Hand Guard
Rail Mounts



Harris® Bipod

Rifle Specifications

Rifle Models	Caliber	Action Type	Operating System	Stock Type	Forend Type		Weight w/o Mag	Overall Length	Length Stock Collapsed	Length Stock Folded	Barrel Length	Rifling	Trigger Type	Trigger Weight	Mag Type	Mag Capacity
SIG556® Rifles						SIG556® Rifles										
SIG556 Classic	5.56 x 45mm NATO	Semi-auto	Gas Piston, Rotating Bolt	Swiss Type Folding	Polymer	SIG556 Classic	8.2 lbs	36.1"	34.6"	27.1"	16"	1 in 7"	2 Stage	7.5 lbs	AR-15 Type	30
SIG556 Classic SWAT	5.56 x 45mm NATO	Semi-auto	Gas Piston, Rotating Bolt	Swiss Type Folding	Alloy Quad	SIG556 Classic SWAT	8.4 lbs	36.1"	34.6"	27.1"	16"	1 in 7"	2 Stage	7.5 lbs	AR-15 Type	30
SIG556 Patrol	5.56 x 45mm NATO	Semi-auto	Gas Piston, Rotating Bolt	Swiss Type Folding	Polymer	SIG556 Patrol	7.5 lbs	36.1"	34.6"	27.1"	16"	1 in 7"	2 Stage	7.5 lbs	AR-15 Type	30
SIG556 Patrol SWAT	5.56 x 45mm NATO	Semi-auto	Gas Piston, Rotating Bolt	Swiss Type Folding	Alloy Quad	SIG556 Patrol SWAT	7.7 lbs	36.1"	34.6"	27.1"	16"	1 in 7"	2 Stage	7.5 lbs	AR-15 Type	30
SIG556 DMR	5.56 x 45mm NATO	Semi-auto	Gas Piston, Rotating Bolt	Magpul PRS Fixed	Alloy Quad	SIG556 DMR	12.0 lbs	41.5"	N/A	N/A	21"	1 in 10"	2 Stage ¹	5.5 lbs	AR-15 Type	10
SIG Sporting Models						SIG Sporting Models										
SIGSCM™	5.56 x 45mm NATO	Semi-auto	Gas Piston, Rotating Bolt	A2 Type Fxed	Polymer	SIGSCM™	8.0 lbs	36.0"	N/A	N/A	16"	1 in 7"	2 Stage	7.5 lbs	AR-15 Type	10
P556™ Pistols						P556™ Pistols										
P556	5.56 x 45mm NATO	Semi-auto	Gas Piston, Rotating Bolt	N/A	Polymer	P556	6.3 lbs	20.5"	N/A	N/A	10"	1 in 7"	2 Stage	7.5 lbs	AR-15 Type	30
P556 SWAT	5.56 x 45mm NATO	Semi-auto	Gas Piston, Rotating Bolt	N/A	Alloy Quad	P556 SWAT	6.5 lbs	20.5"	N/A	N/A	10"	1 in 7"	2 Stage	7.5 lbs	AR-15 Type	30
SIG522™ Rifles						SIG522™ Rifles										
SIG522	.22LR	Semi-auto	Blowback	Swiss Type Folding	Polymer	SIG522	6.4 lbs	35.1"	33.6"	26.1"	16.6"	1 in 16"	1 Stage	5.0 lbs	522	25
SIG522 SWAT	.22LR	Semi-auto	Blowback	Swiss Type Folding	Alloy Quad	SIG522 SWAT	6.6 lbs	35.1"	33.6"	26.1"	16.6"	1 in 16"	1 Stage	5.0 lbs	522	25
P522™ Pistols						P522™ Pistols										
P522	.22LR	Semi-auto	Blowback	Swiss Type Folding	Polymer	P522	5.4 lbs	20.5"	N/A	N/A	10.6"	1 in 16"	1 Stage	5.0 lbs	522	25
P522 SWAT	.22LR	Semi-auto	Blowback	Swiss Type Folding	Alloy Quad	P522 SWAT	5.6 lbs	20.5"	N/A	N/A	10.6"	1 in 16"	1 Stage	5.0 lbs	522	25
SIG516™ Rifles						SIG516™ Rifles										
SIG516 Patrol	5.56 x 45mm NATO	Semi-auto	Gas Piston, Rotating Bolt	SOPMOD Collapsible	Alloy Quad	SIG516 Patrol	7.3 lbs	39.5"	36.0"	N/A	16"	1 in 7"	MIL-SPEC	7.6 lbs	AR-15 Type	30
SIG516 Precision Marksman	5.56 x 45mm NATO	Semi-auto	Gas Piston, Rotating Bolt	Magpul PRS Fixed	Alloy Quad	SIG516 Precision Marksman	7.7 lbs	37.3"	36.2"	N/A	18"	1 in 7"	2 Stage	5.4 lbs	AR-15 Type	10
SIG716™ Rifles						SIG716™ Rifles										
SIG716 Patrol	7.62 x 51mm NATO	Semi-auto	Gas Piston, Rotating Bolt	SOPMOD Collapsible	Alloy Quad	SIG716 Patrol	9.3 lbs	41.3"	38.0"	N/A	16"	1 in 12"	MIL-SPEC	7.6 lbs	M14 Type	20
SIG716 Precision Marksman	7.62 x 51mm NATO	Semi-auto	Gas Piston, Rotating Bolt	Magpul PRS Fixed	Alloy Quad	SIG716 Precision Marksman	9.3 lbs	39.4"	36.0"	N/A	16"	1 in 11"	2 Stage	5.4 lbs	M14 Type	20
SSG 3000™ Rifles						SSG 3000™ Rifles										
SSG 33000	7.62 x 51mm NATO	N/A	60° Short Bolt Action	McMillian Tactical	N/A	SSG 3000	12.0 lbs	46.4"	N/A	N/A	23.5"	1 in 12"	2 Stage ³	3.5 lbs	SSG 3000	5
Tactical 2™ Rifles						Tactical 2™ Rifles										
Tactical 2	.223 REM	N/A	Straight Pull Bolt Action	Blaser Tactical	N/A	Tactical 2	11.9 lbs	44.5" ²	N/A	N/A	24.7"	1 in 10"	1 Stage ³	2.2 - 3.3 lbs	TAC2	5
Tactical 2	.308 WIN	N/A	Straight Pull Bolt Action	Blaser Tactical	N/A	Tactical 2	11.9 lbs	44.5" ²	N/A	N/A	24.7"	1 in 11"	1 Stage ³	2.2 - 3.3 lbs	TAC2	5
Tactical 2	.300 WIN MAG	N/A	Straight Pull Bolt Action	Blaser Tactical	N/A	Tactical 2	12.1 lbs	45.5" ²	N/A	N/A	25.6"	1 in 11"	1 Stage ³	2.2 - 3.3 lbs	TAC2	4
Tactical 2	.338 LAPUA	N/A	Straight Pull Bolt Action	Blaser Tactical	N/A	Tactical 2	12.6 lbs	46.9" ²	N/A	N/A	27.0"	1 in 12"	1 Stage ³	2.2 - 3.3 lbs	TAC2	4

Notes

1 - Over Travel Stop

2 - Overall length w/o Muzzle Brake - add 1.5" with Muzzle Brake installed

3 - Adjustable

Dimensions are approximate. Specifications subject to change without notice.

Pistol Specifications

Pistol Models	Caliber & Standard Magazine Capacities						Action Type & Trigger Weight (lbs) Avg					Overall Measurements					Weights w/Mag		Sights			Grips				Frame Material			Frame Finish			Slide Material		Slide Finish			Other									
	.22LR	.380ACP	9mm	.357SIG	.40S&W	.45ACP	DA/SA	SRT (DA/SA)	DAO	DAK	SAO	Length (in)	Height (in)	Width (in)	Barrel Length (in)	Sight Radius (in)	Alloy Frame (oz)	Stainless Frame (oz)	Contrast	Night Sights	Adjustable Target	Polymer	Custom Wood	Aluminum	Rubber	Alloy	Stainless	Polymer	Black Hard Anodize	Nitron	Stainless	Black Polymer	Alloy	Stainless Steel	Blued	Nitron	Stainless	Accessory Rail	Threaded Barrel	Beavertail	Ambi Safety	Mag Well				
P250® Fullsize			17	14	14	10			6			8.1	5.5	1.4	4.7	6.6		29.4	●	●		●					●			●			●		●		●	●								
P250 Compact			15	13	13	9			6			7.2	5.3	1.4	3.9	5.8		26.5	●	●		●					●			●			●		●		●	●								
P250 Subcompact			12	10	10	6			6			6.7	4.7	1.1	3.6	5.5		24.9	●	●		●					●			●			●		●		●									
P220® X-Six™						8					2-4	9.9	5.5	1.6	6.0	8.6		43.7			●		●				●			●			●					●			●					
P220 Match						8	10/4.4				5	8.3	5.5	1.5	5.0	6.8	33.6	39.1			●	●	●	●		●	●		●		●			●			●	●				●				
P220	10					8	10/4.4	10/4.4	7.5	5	7.7	5.5	1.5	4.4	6.3	30.4	39.1	●	●		●	●	●		●	●		●		●			●		●		●	●	●			●				
P220 Carry						8	10/4.4	10/4.4	7.5	5	7.1	5.5	1.5	3.9	5.7	30.4	39.1	●	●		●	●	●		●	●		●		●			●		●		●	●	●			●				
P220 Compact						6	10/4.4	10/4.4	7.5		7.6	5.0	1.5	3.9	5.7	29.6			●	●		●	●	●		●	●		●		●			●		●		●	●	●						
P226®	10		15	12	12		10/4.4	10/4.4	6.5		7.7	5.5	1.5	4.4	6.3	34.0	42.2	●	●		●	●	●		●	●		●		●			●		●		●	●	●							
P226 X-Six			19								2-4	9.8	5.9	1.7	6.0	8.1		47.8			●		●				●			●			●					●			●	●	●			
P226 X-Five™			19		14						2-4	8.8	5.9	1.7	6.0	7.1		46.0			●		●				●			●			●						●			●	●	●		
P226 X5 Competition			19		14						4.5	8.8	5.9	1.7	5.0	7.1		46.7			●	●					●			●			●							●	●	●				
P226 X5 All Round			17		12		10/4.4					8.8	5.9	1.7	5.0	7.1		45.2			●	●					●			●			●							●			●			
P226 X5 Tactical			15								4.5	8.8	5.7	1.6	5.0	7.1	35.5			●		●				●			●			●			●		●		●	●	●	●				
P229®	10		13	12	12		10/4.4	10/4.4	6.5		7.1	5.4	1.5	3.9	5.7	32.0	40.2	●	●		●	●	●		●	●		●		●			●		●		●	●	●							
P232		7					10/4.4					6.6	4.7	1.3	3.6	4.8	18.5	23.6	●	●		●		●	●	●	●	●	●		●			●		●		●								
P239®			8	7	7		10/4.4	10/4.4	6.5		6.6	5.1	1.2	3.6	5.2	29.5			●	●		●				●			●				●		●		●		●			●				
P238™		6									8	5.5	3.9	1.1	2.7	3.8	15.2	20.1	●	●		●	●	●		●	●		●		●			●		●		●								
1911						8					5	8.7	5.5	1.4	5.0	6.5		41.6	●	●	●	●	●	●		●			●	●			●		●		●		●		●					
1911 Carry						8					5	7.7	5.5	1.4	4.2	5.7		38.8		●			●	●		●			●	●			●		●		●		●		●					
1911 Compact C3®						7					5	7.7	4.8	1.4	4.2	5.7	29.5	35.5		●			●			●			●	●			●		●		●		●		●					
Mosquito®	10						12/4					7.2	5.3	1.5	3.9	5.5	24.6		●			●					●			●	●		●		●				●							
Mosquito Threaded	10						12/4					8.3	5.3	1.5	4.9	5.5	27.8		●			●					●			●	●		●		●		●		●	●						
Mosquito Sport	10						12/4					8.3	5.3	1.5	4.9	6.5	27.8				●	●					●			●	●		●		●		●		●							

Notes:

1 - Threaded barrel models - add 0.5" barrel & overall length

2 - Higher capacity magazines ship with certain models and are also available separately

3 - 10 round magazines are available for most models

4 - Dimensions are approximate. Specifications subject to change without notice.

Pistol Editions	Available in the following models	Calibers	Action Type	Dimension Adjustments	Sights Front & Rear	Grips	Material Frame/Slide	Finish Frame/Slide	Other Features
Super Match	220 Match	45	SAO	Length: +0.5"	Adj Target	Custom Wood	Alum/Stainless	Blk HC/Stainless	Beavertail, Test Target, Custom Shop Model
Match Elite	220 Match	45	SRT	Length: +0.5"	Adj Target	Aluminum	Stainless	Stainless	Black Anodize Alum Grips
Platinum Elite	220/220CA, 226/229	45, 9/40	SRT	Length: +0.5"	Adj Combat Night	Aluminum	Alum/Stainless	Blk HC/Stainless	Ground Slide Flats, Custom Shop Model
Platinum Elite (1911)	1911/1911CA	45	SAO	No Change	Adj Combat Night	Aluminum	Stainless	Blk HC/Stainless	Ground Slide Flats, Custom Shop Model
Elite Stainless	220/220CA, 226/229	45, 9/40	SRT	Length: +0.5"	Adj Combat Night	Custom Wood	Stainless	Stainless	All Stainless, Rosewood Grips
Elite	220/220CA, 226/229	45, 9/40	SRT	Length: +0.5"	Adj Combat Night	Custom Wood	Alum/Stainless	Blk HC/Nitron	Black Finish, Rosewood Grips
Elite Dark	220/220CA, 226/229	45, 9/40/357	SRT	Length: +0.5"	Adj Combat Night	Aluminum	Alum/Stainless	Blk HC/Nitron	Black Finish, Black Anodize Alum Grips
E ²	226/229	9	SRT	No Change	SIGLITE	1 Piece Poly	Alum/Stainless	Blk HC/Nitron	Ergonomic slim fit 1-pc grip, SRT, (3) 15rd mag
Equinox®	220/220CA, 226/229, 238	45, 40, 380	DA/SA	No Change	TRUGLO TFO/SIGLITE	Custom Wood	Alum/Stainless	Blk HC/Nitron	Ground Slide Flats, Custom Shop Model
SAS™	238	380	SAO	No Change	SIGLITE	Custom Wood	Alum/Stainless	Blk HC/Stainless	Radical Dehorning, Custom Shop Model
SAS Gen II	220CA/CO, 229/239	45, 9/40/357	SRT	No Change	SIGLITE	Polymer	Alum/Stainless	Blk HC/Nitron, Stainless	Radical Dehorning, Custom Shop Model
Super Cap Tactical	226/229	9/40	DA/SA	Height: + 0.5"	TRUGLO TFO/SIGLITE	Polymer	Alum/Stainless	Blk HC/Nitron	Front Cocking Serrations, Plus 2 Mags
Combat	220, 226	45, 9	DA/SA	No Change	SIGLITE	Polymer	Alum/Stainless	FDE HC/ Nitron	Flat Dark Earth, Anti-corrosion Coatings
Navy	226	9	DA/SA	No Change	Contrast	Polymer	Alum/Stainless	Blk HC/Nitron	Anchor Engraving, Anti-corrosion Coatings
Blackwater® Tactical	226	9	SRT	Length: +0.5"	TRUGLO TFO/SIGLITE	Magwell Poly	Alum/Stainless	Blk HC/Nitron	Beavertail, Blackwater Logo, Plus 2 Mags
Blackwater	1911	45	SAO	Height: +0.2"	NOVAK Night	Custom Wood	Alum/Stainless	Nitron/Nitron	Magwell, Ambi Safety, Blackwater Logos
USPSA™	226	9	SRT	Length: +0.5"	Dawson FO/ Warren	Polymer	Alum/Stainless	Blk HC/Nitron	Beavertail, USPSA Engraving, IPSC Approved
USPSA Stainless	226	9	SRT	Length: +0.5"	Dawson FO/ Warren	Polymer	Stainless	Stainless/Nitron	Beavertail, USPSA Engraving, IPSC Approved
1911 TTT	1911	45	SAO	No Change	Adj Combat Night	Custom Wood	Stainless	Stainless/Nitron	Reverse 2-Tone, Black Controls
1911 STX	1911	45	SAO	Height: +0.2"	Adj Combat Night	Custom Wood	Stainless	Stainless/Nitron	Magwell, Ambi, Flat Top, Custom Shop Model
1911 RCS	1911	45	SAO	No Change	NOVAK Night	Custom Wood	Alum/Stainless	Blk HC/Nitron, Stainless	Radical Dehorning, Custom Shop Model

Notes:

1 - All Elite models feature Beavertail, front strap checkering, front cocking serrations, Short Reset Trigger (SRT), Custom grips

2 - CA = Carry (full size frame, reduced length slide - available in P220 and 1911 models)

3 - CO = Compact (reduced height frame, reduced length slide - available in P220 and 1911 models)

4 - SRT = Short Reset Trigger (DA/SA Trigger System with 60% shorter trigger reset)

5 - SIGLITE = SIG SAUER Night Sights (enhanced night visibility)

6 - TFO = Tritium Fiber Optic (enhanced daytime / night visibility)

7 - FO = Fiber Optic (enhanced daytime visibility)

8 - Alum = Aluminum

9 - HC = Hard Coat Anodize

10 - FDE = Flat Dark Earth